

About Us

integrate the strategic objectives in their management and production systems in a transverse manner, so that the implementation of processes that are respectful towards the environment are not limited to specific actions, but instead from a part of its know how as a whole.

objective is to offer personalized and customized solutions for architecture and interior design through pieces which work as a complement for coverings and floorings. With high levels of aesthetic value, the ceramic pieces we manufacture achieve in adding extra value to projects thanks not only to their finishes, but also to their suitable adaptability with the rest of the elements.

This reflects in this catalogue which we have created with utmost creativity. The catalogue is one of the principal tools that still nowadays keep together the relationship between firms, resellers and consumers.

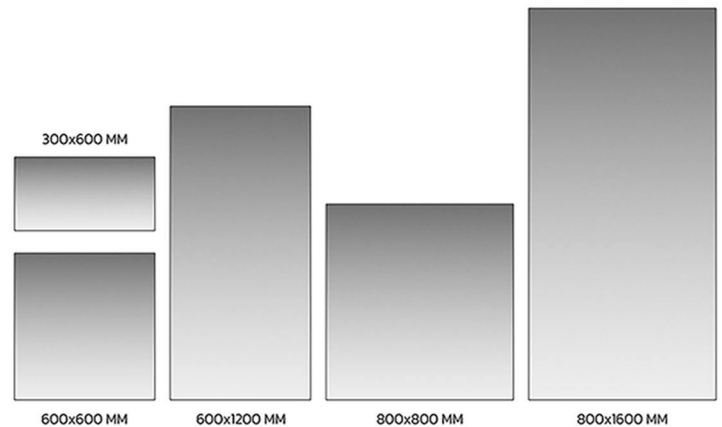
Once again following its own style, translates the trends and the innovations of the ceramic sector in something captivating and usable for the everyday design.

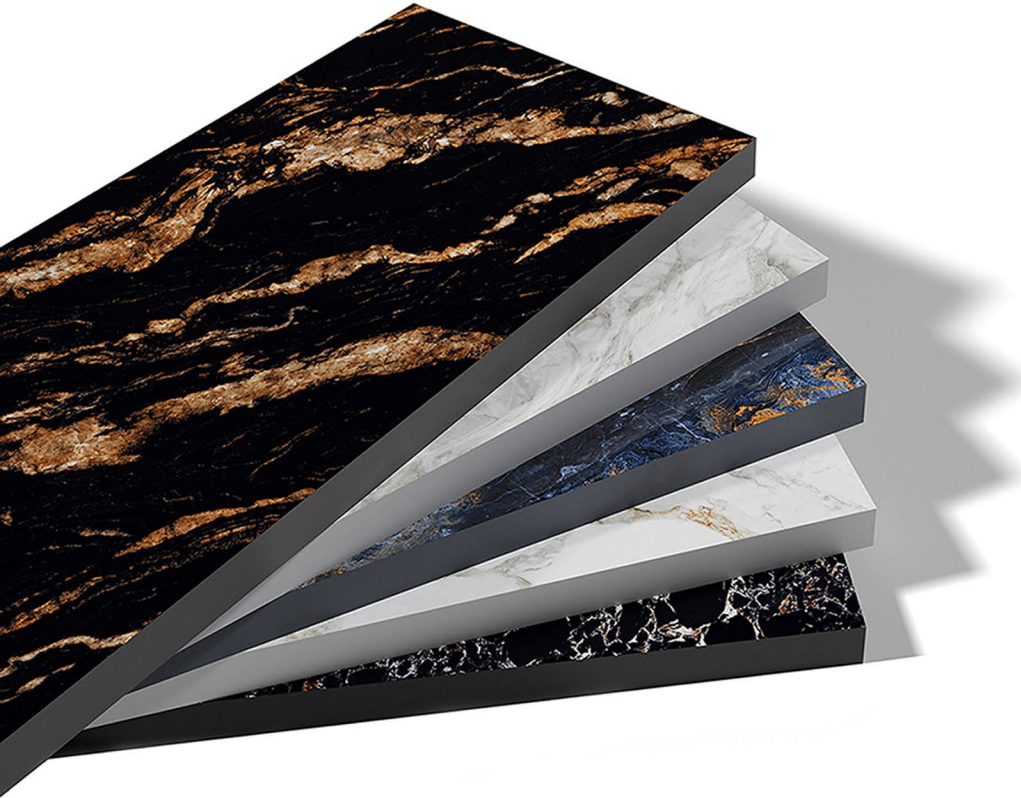
Various Size of Tiles

Tiles come in a variety of sizes, and the right size for a particular space depends on a few factors, such as the size of the room, the intended use of the space, and personal preference.

The fabulous designs from our different collections will be a treat to your eyes and will add value to your luxury lifestyle.

It's important to consider the scale of the room and the tile pattern when choosing tile size. For example, larger tiles can make a small room appear larger, while smaller tiles can create a more intricate pattern or texture. Ultimately, the choice of tile size depends on personal preference and the desired aesthetic for the space.





Brand Introduction

The brand was launched as a high-end compact surface with revolutionary physical and technical features. uses the best natural raw materials with state-of-the-art technology to create the best surfaces with luxurious designs.

QUALITY
CERTIFICATES

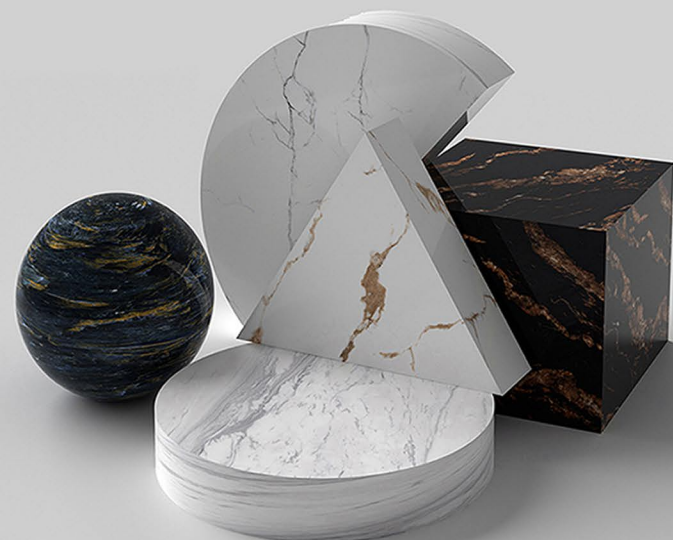


Architecture

CHOICE

Surfaces for Everybody

Tiles have a wide range of practical and decorative uses in architecture and design. They are commonly used as a flooring material, providing a durable and easy-to-clean surface for high traffic areas such as kitchens, bathrooms, and entryways. Tiles can also be used as wall coverings, creating decorative accents and adding texture to a room. They can be used to create intricate mosaic patterns, decorative murals, or even as a backdrop for artwork. In addition, tiles are often used in exterior applications, such as roofing or cladding, where their durability and weather resistance make them an ideal choice. With their versatility and range of materials, tiles continue to be a popular and practical choice in modern design.



300X450mm





1698-LT

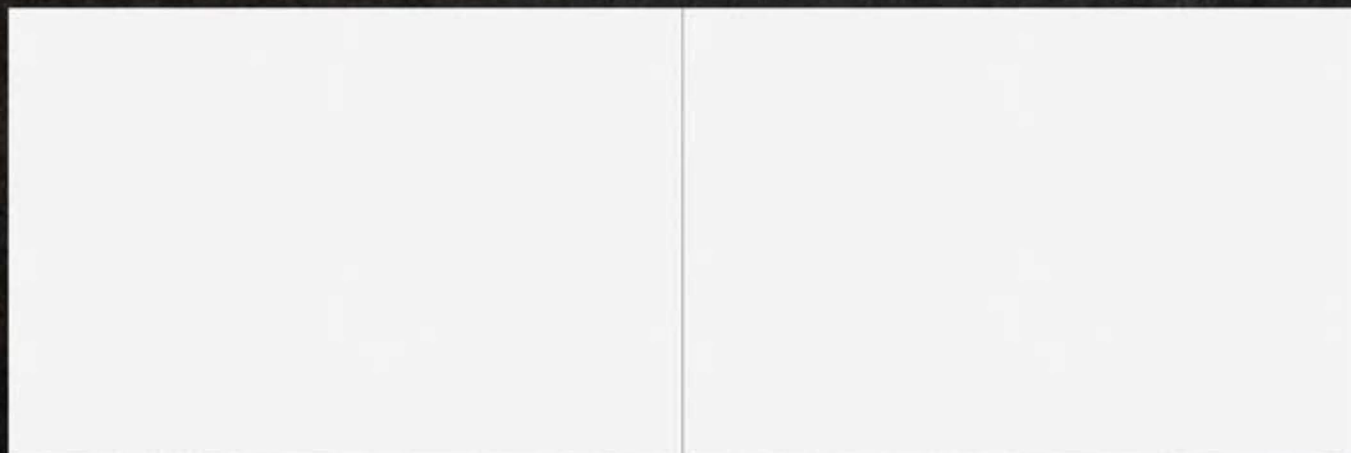


1698-HL-1



1698-LT

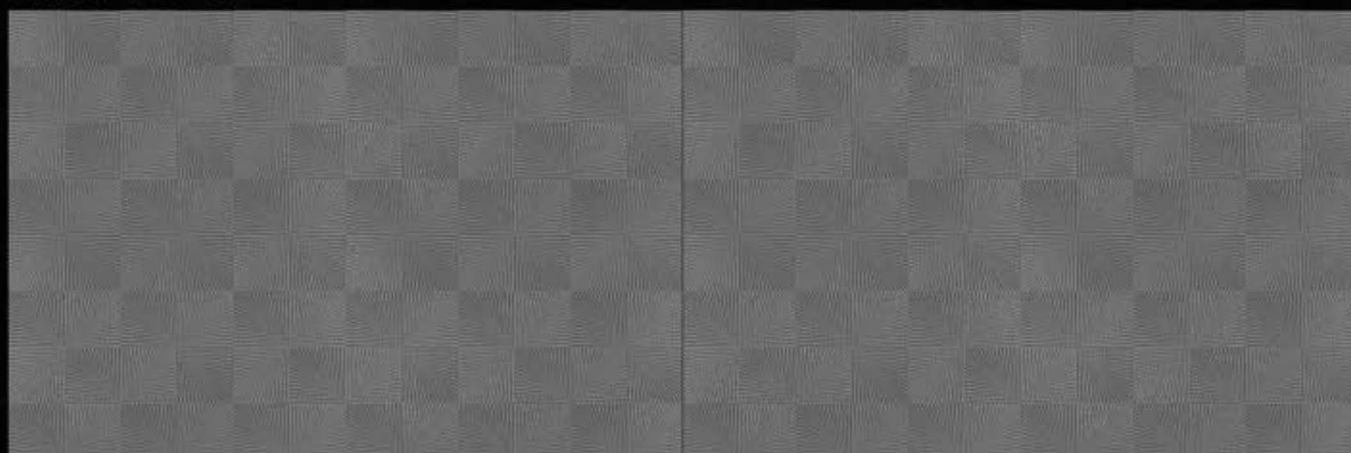




1699-LT

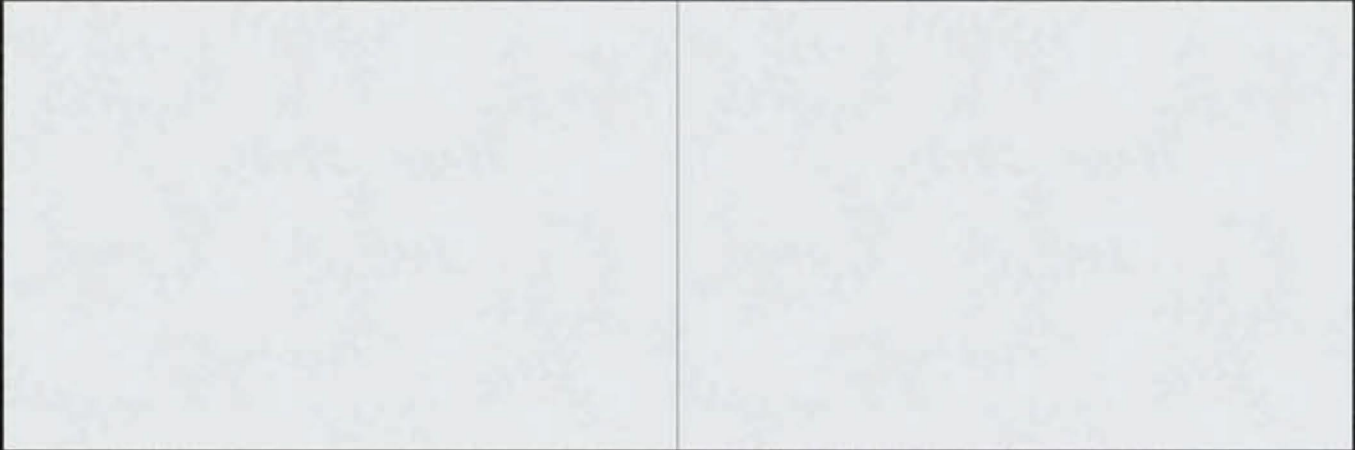


1699-HL-1



1699-DK





1700-LT

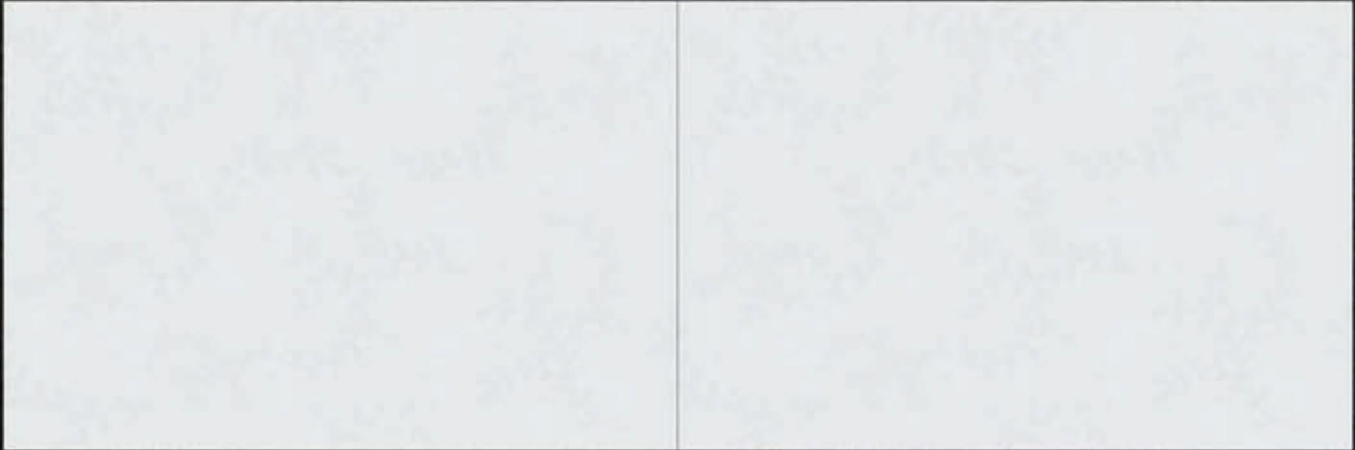


1700-HL-1



1700-DK





1700-LT



1700-HL-2

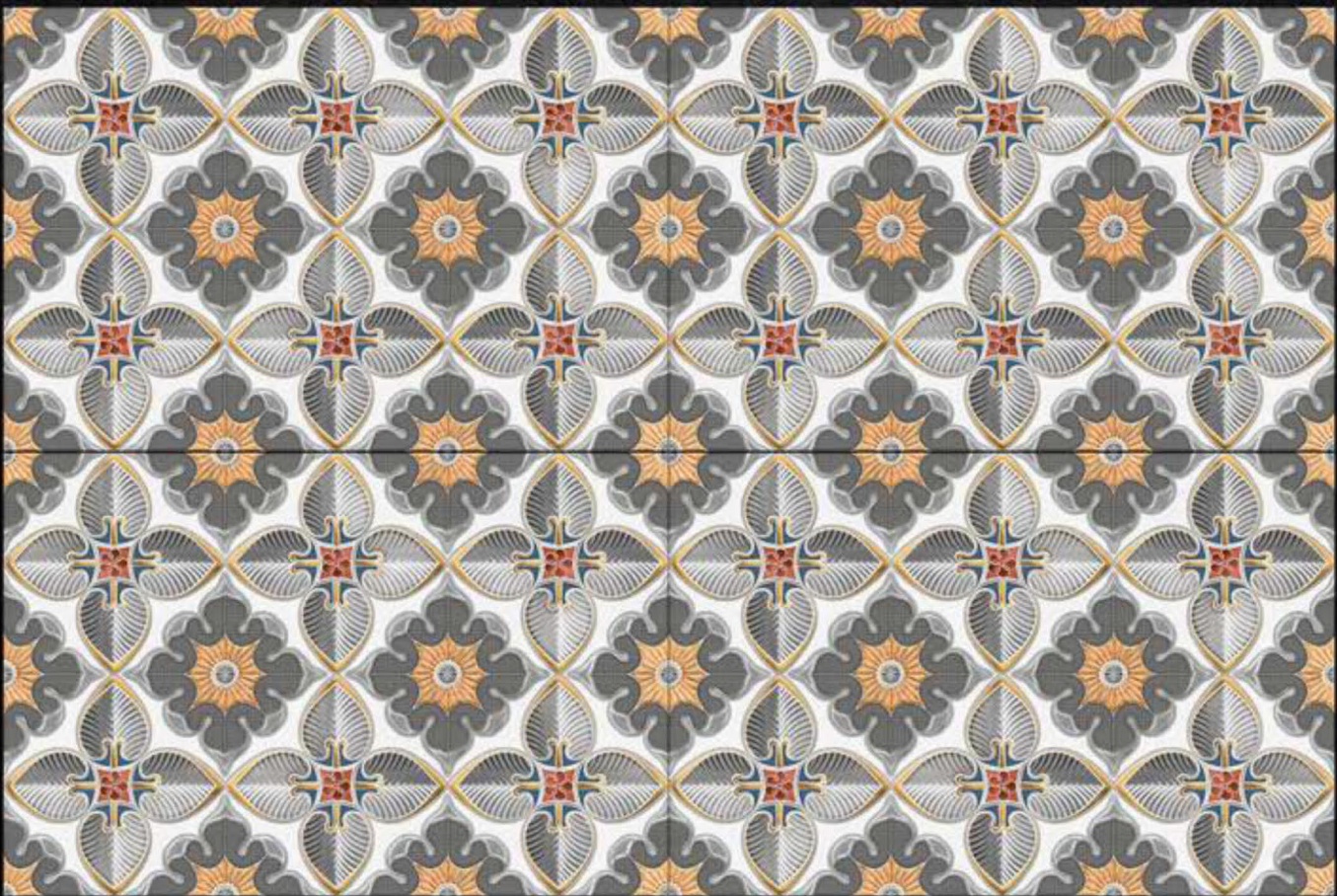


1700-DK





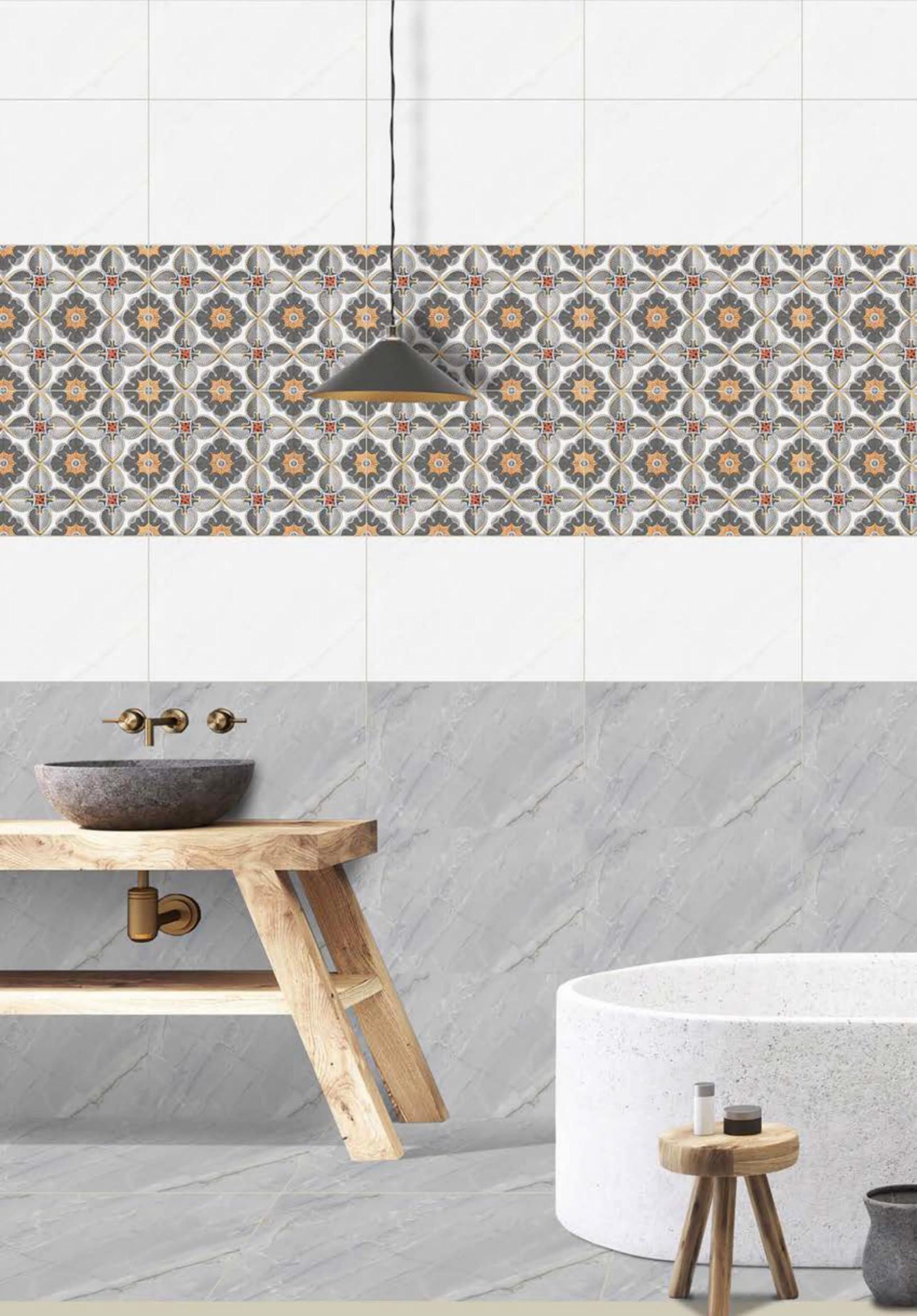
1703-LT

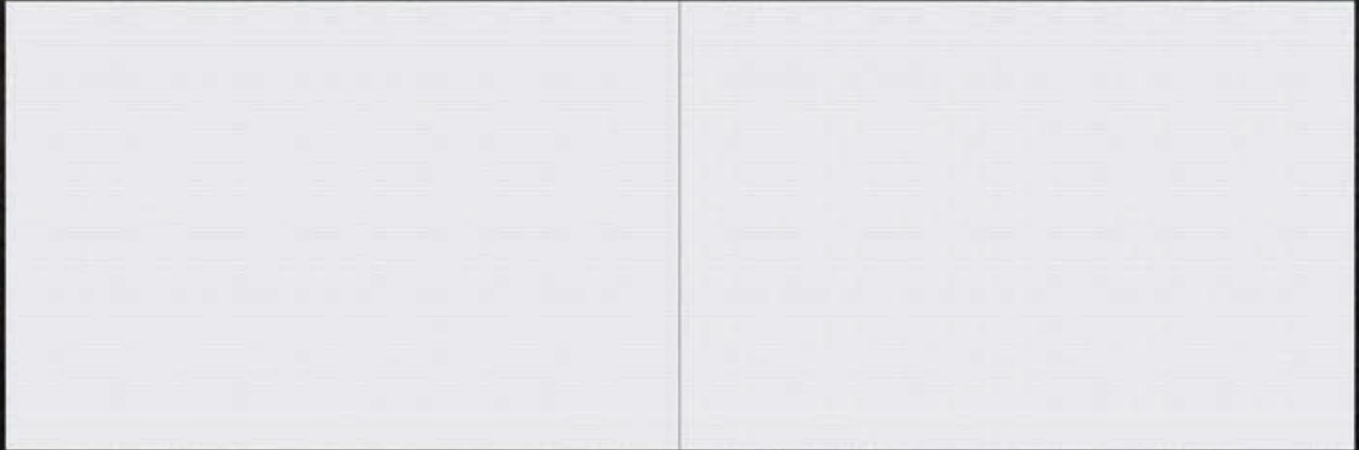


1703-HL-1

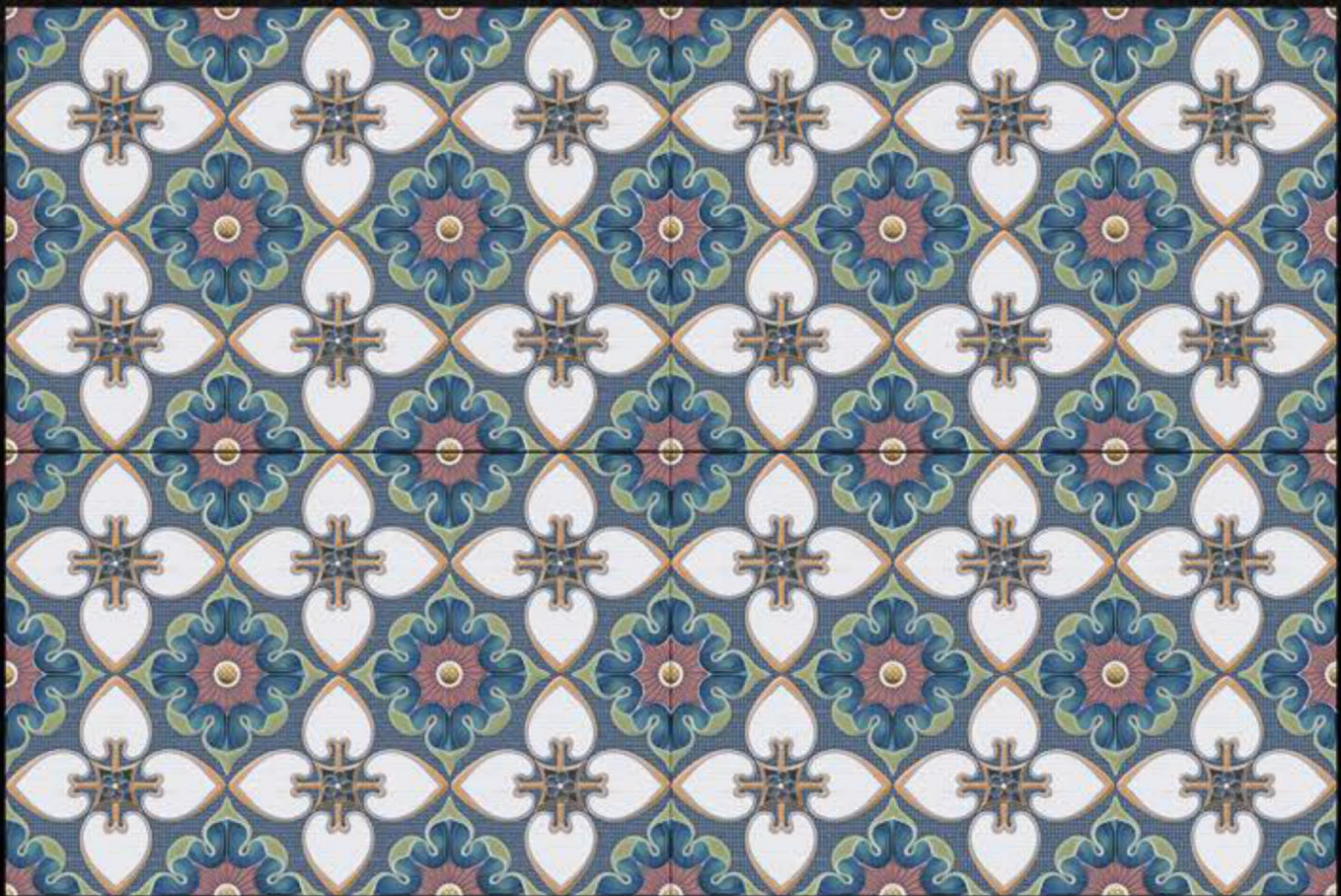


1703-DK

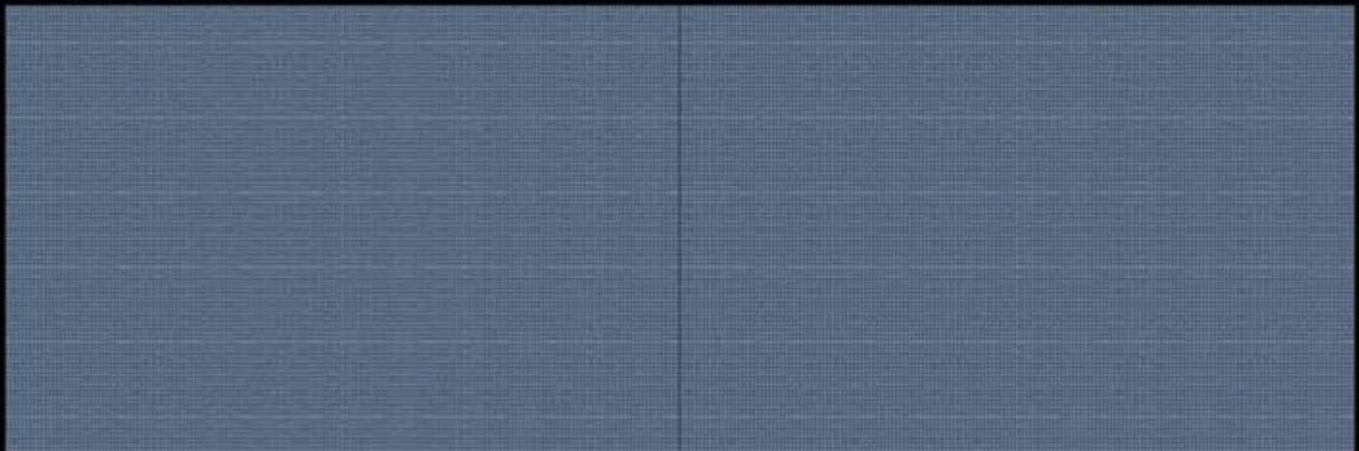




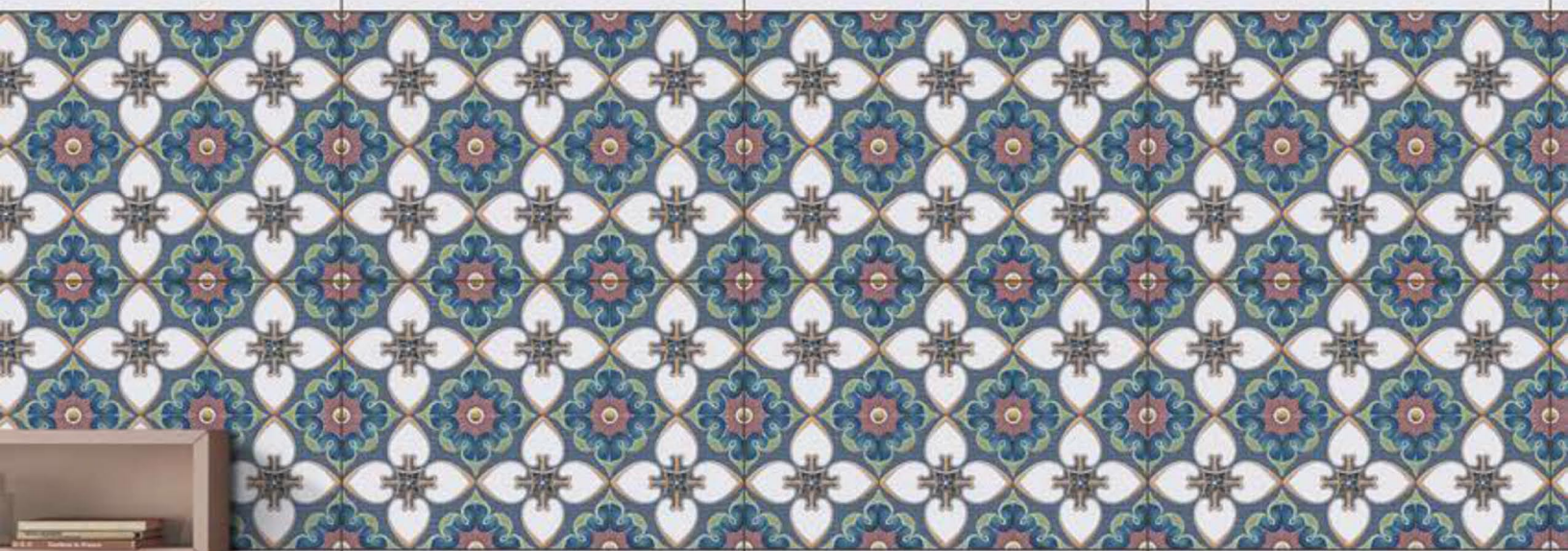
1704-LT



1704-HL-1



1704-DK





1705-LT



1705-HL-1



1705-DK





1706-LT



1706-HL-1

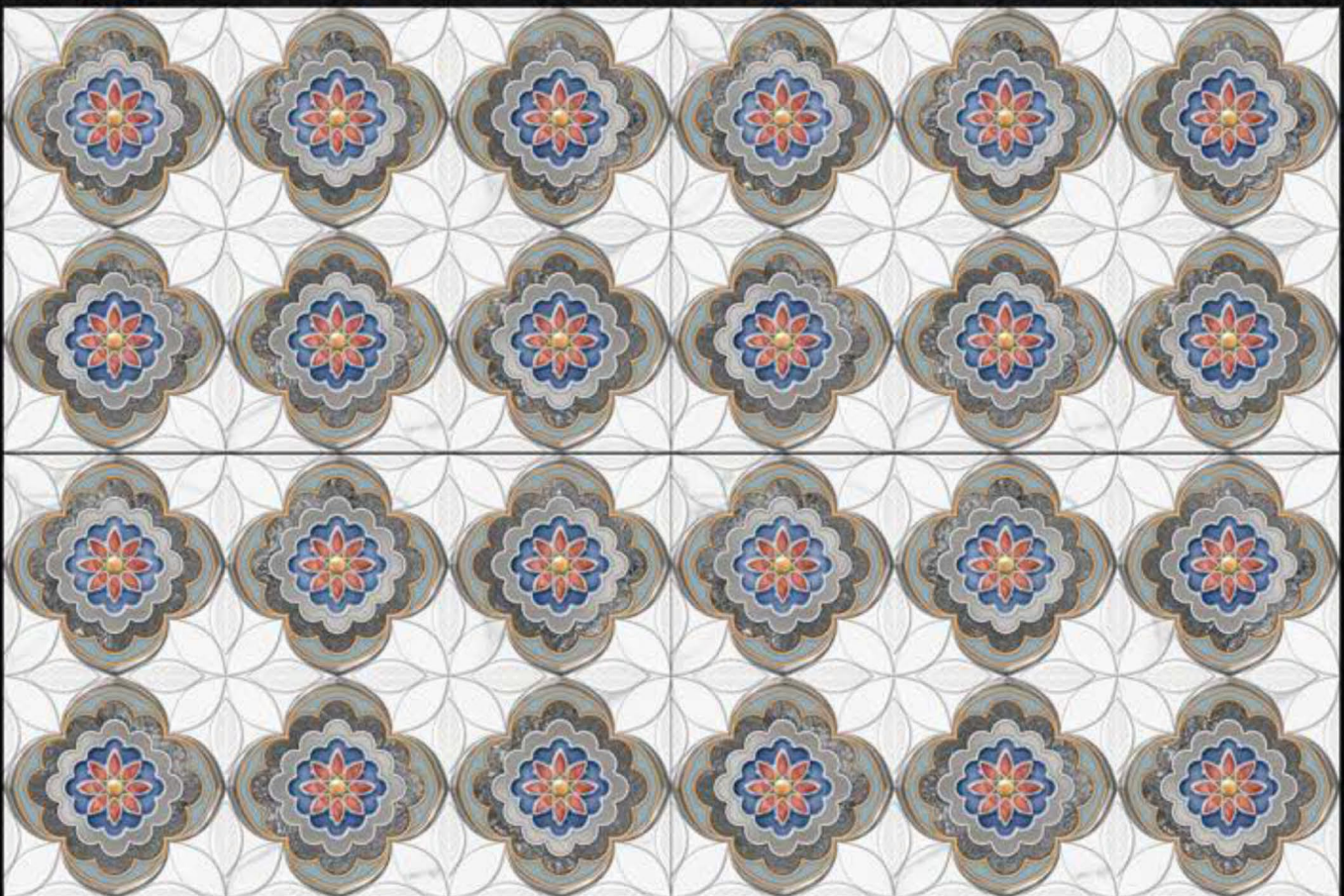


1706-DK





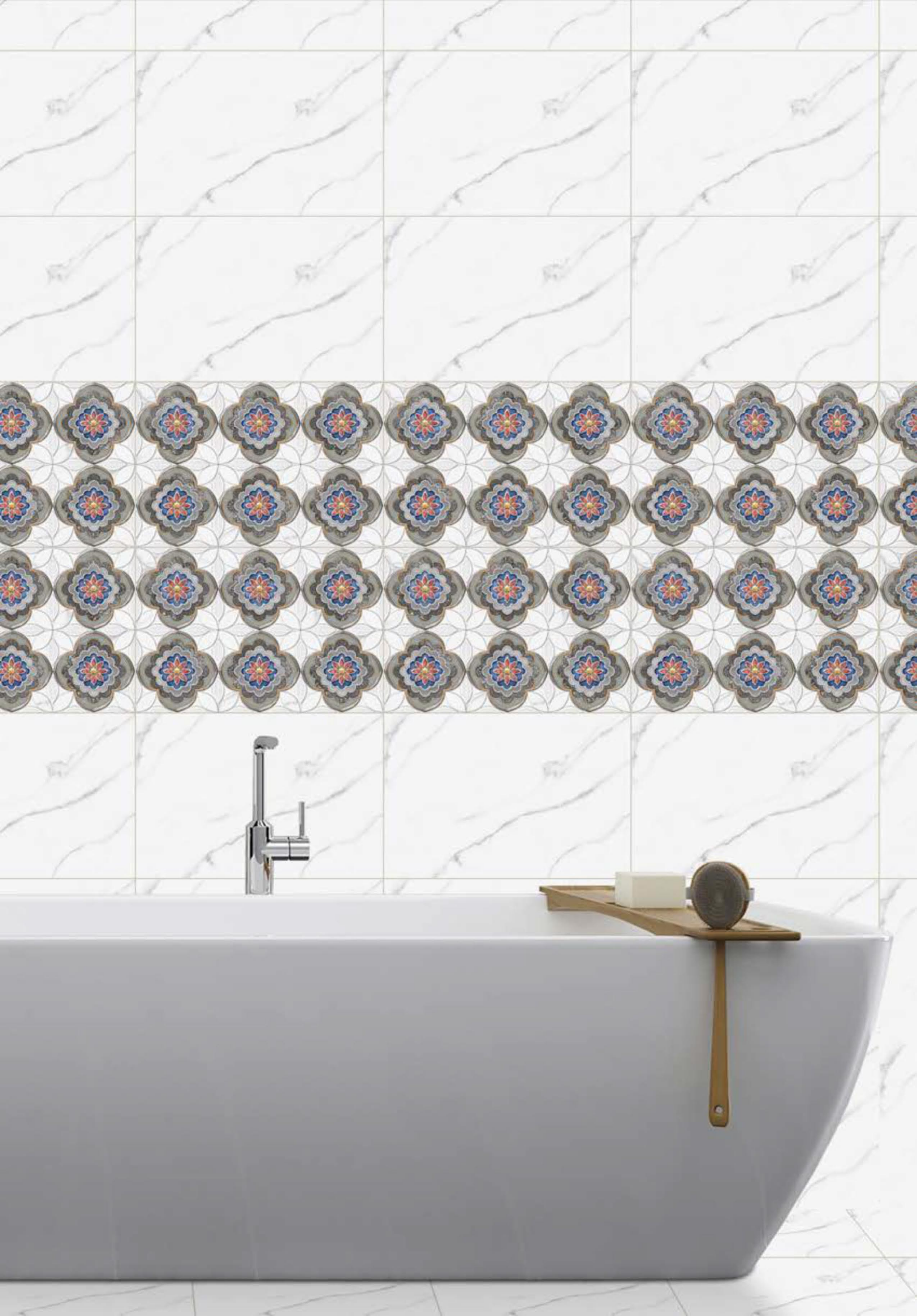
1708-LT

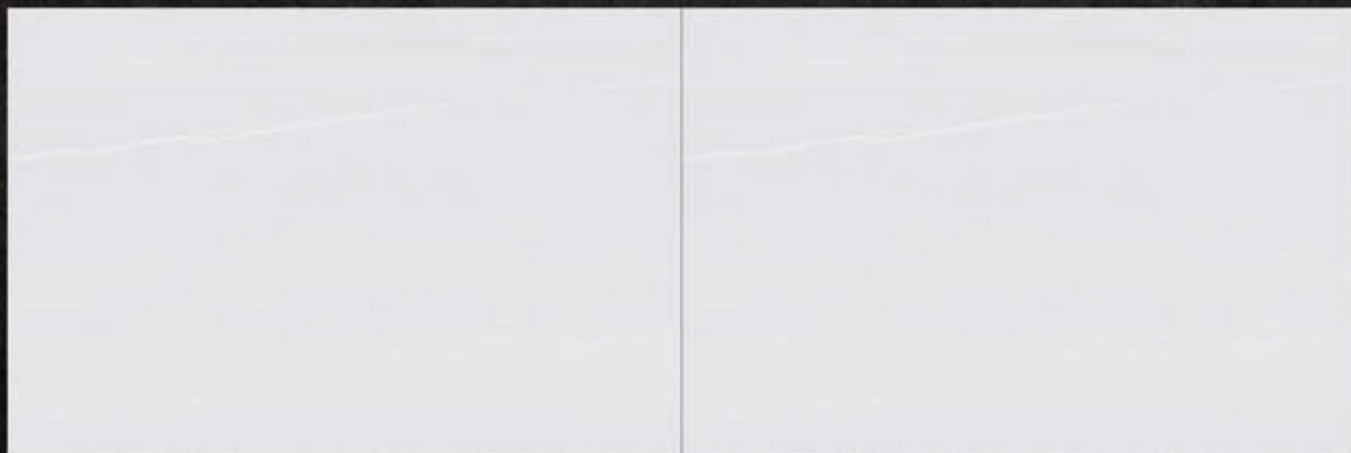


1708-HL-1



1708-LT





1709-LT

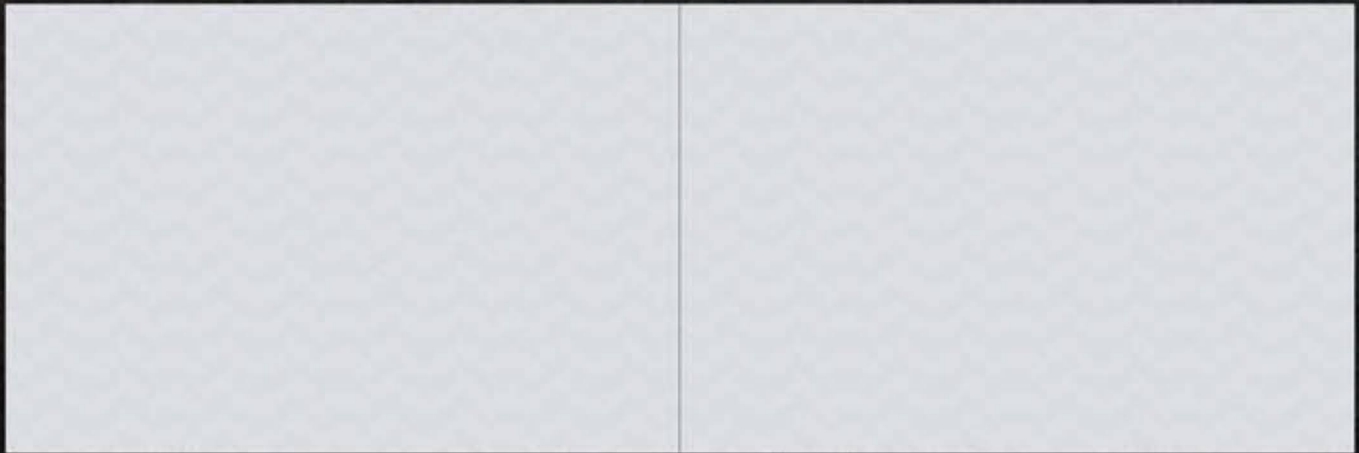


1709-HL-1



1709-DK

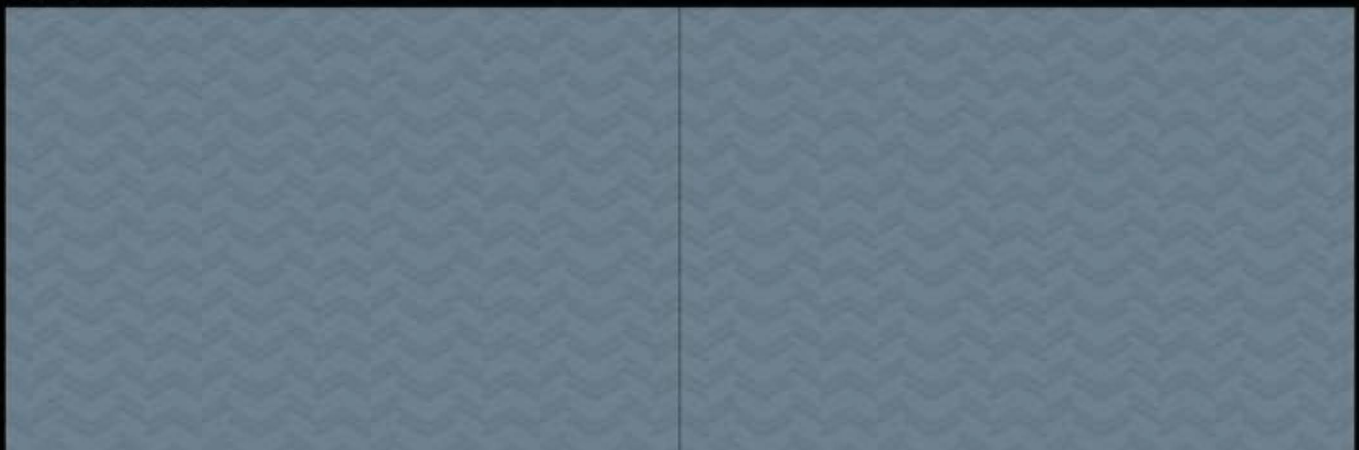




1710-LT



1710-HL-1



1710-DK

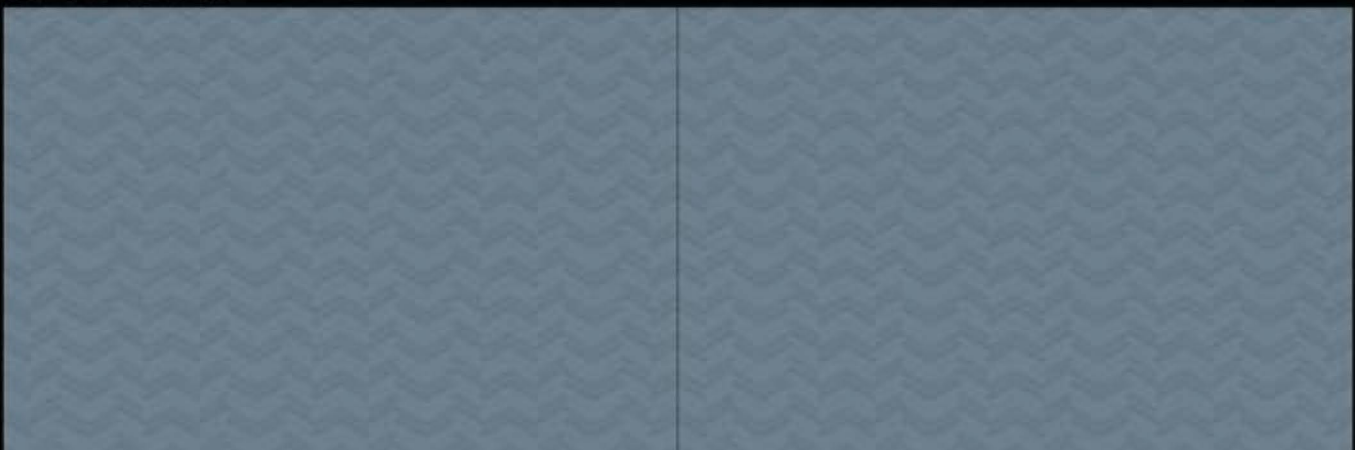




1710-LT



1710-HL-2



1710-DK



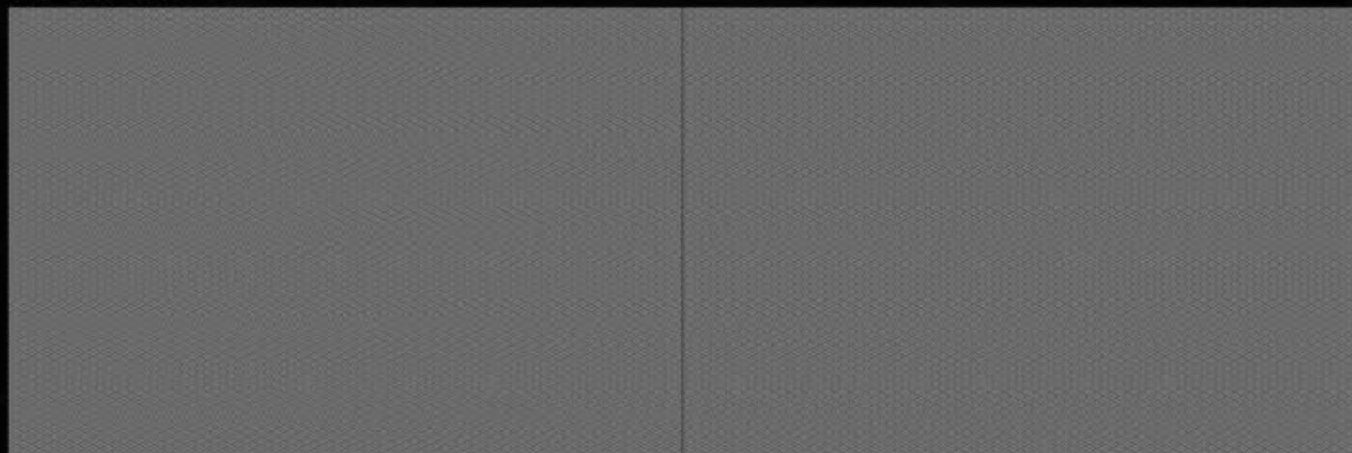
teuco



1711-LT



1711-HL-1



1711-DK

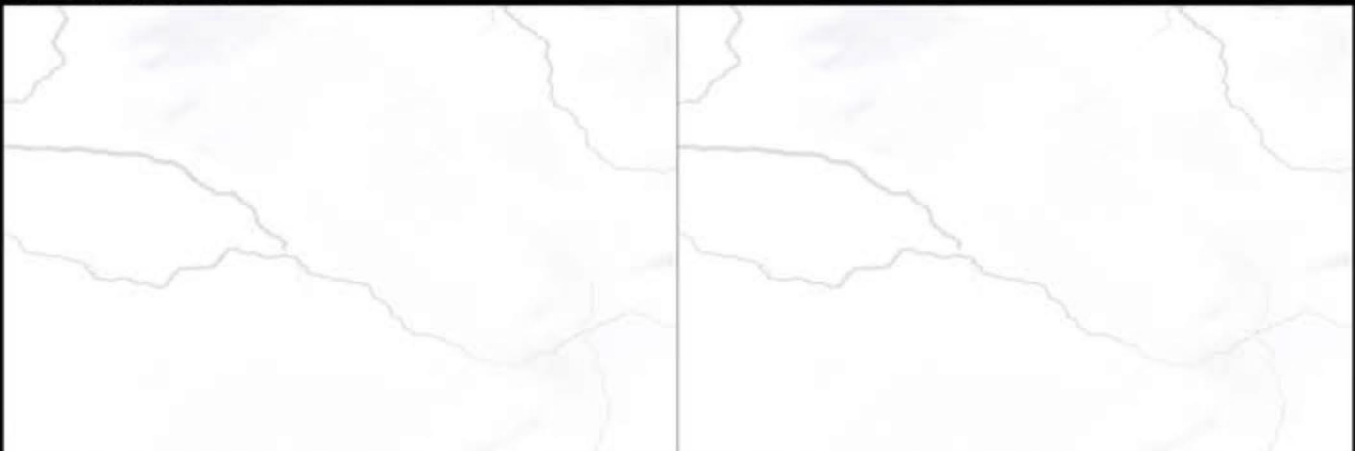




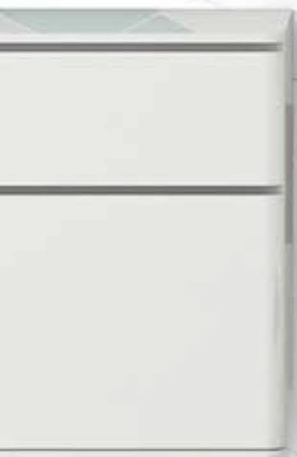
1714-LT

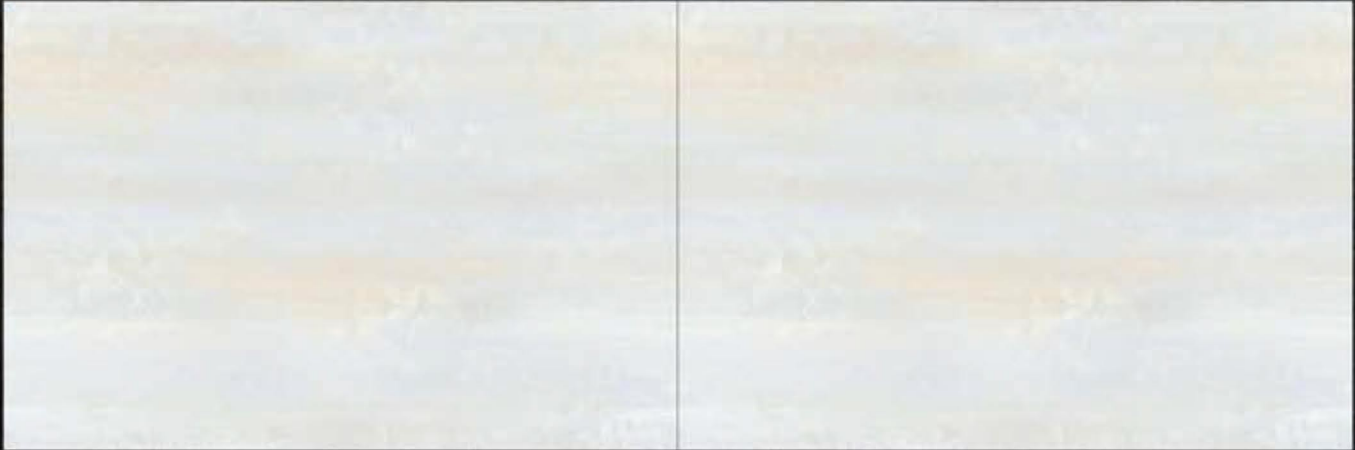


1714-HL-1



1714-LT





1715-LT

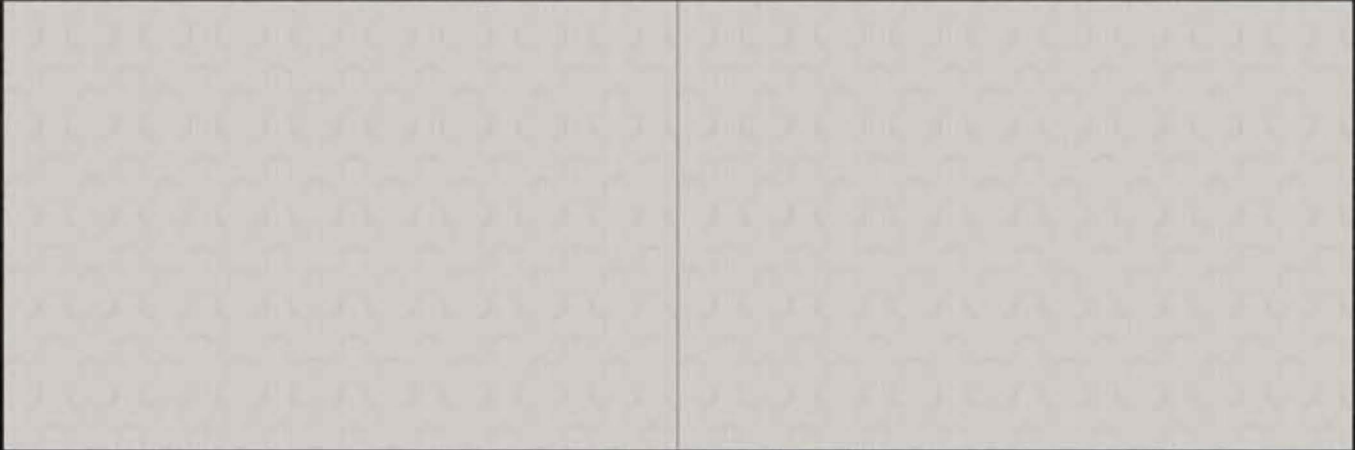


1715-HL-1



1715-DK

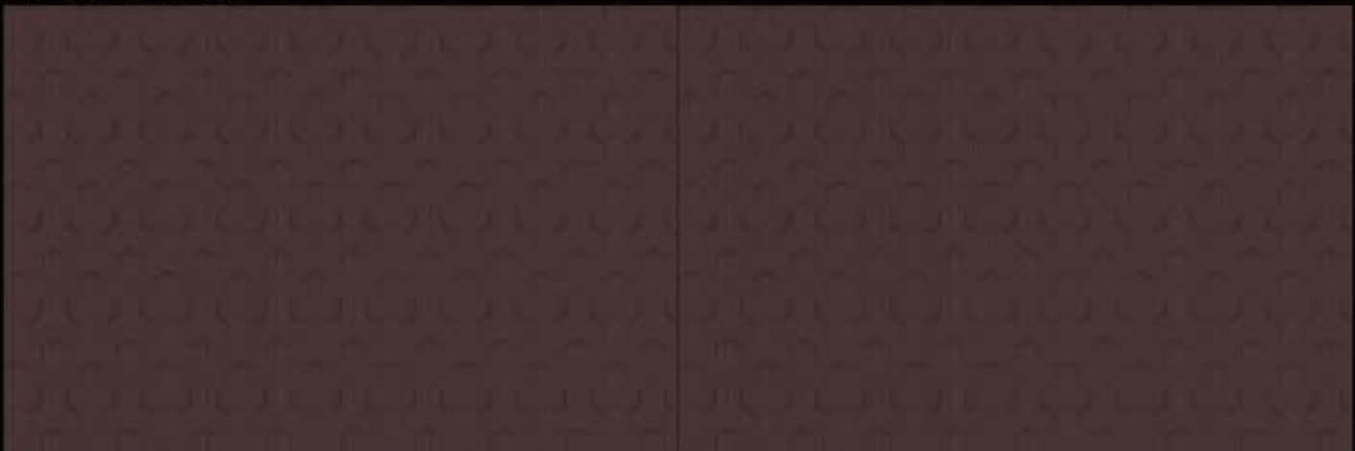




1716-LT



1716-HL-1

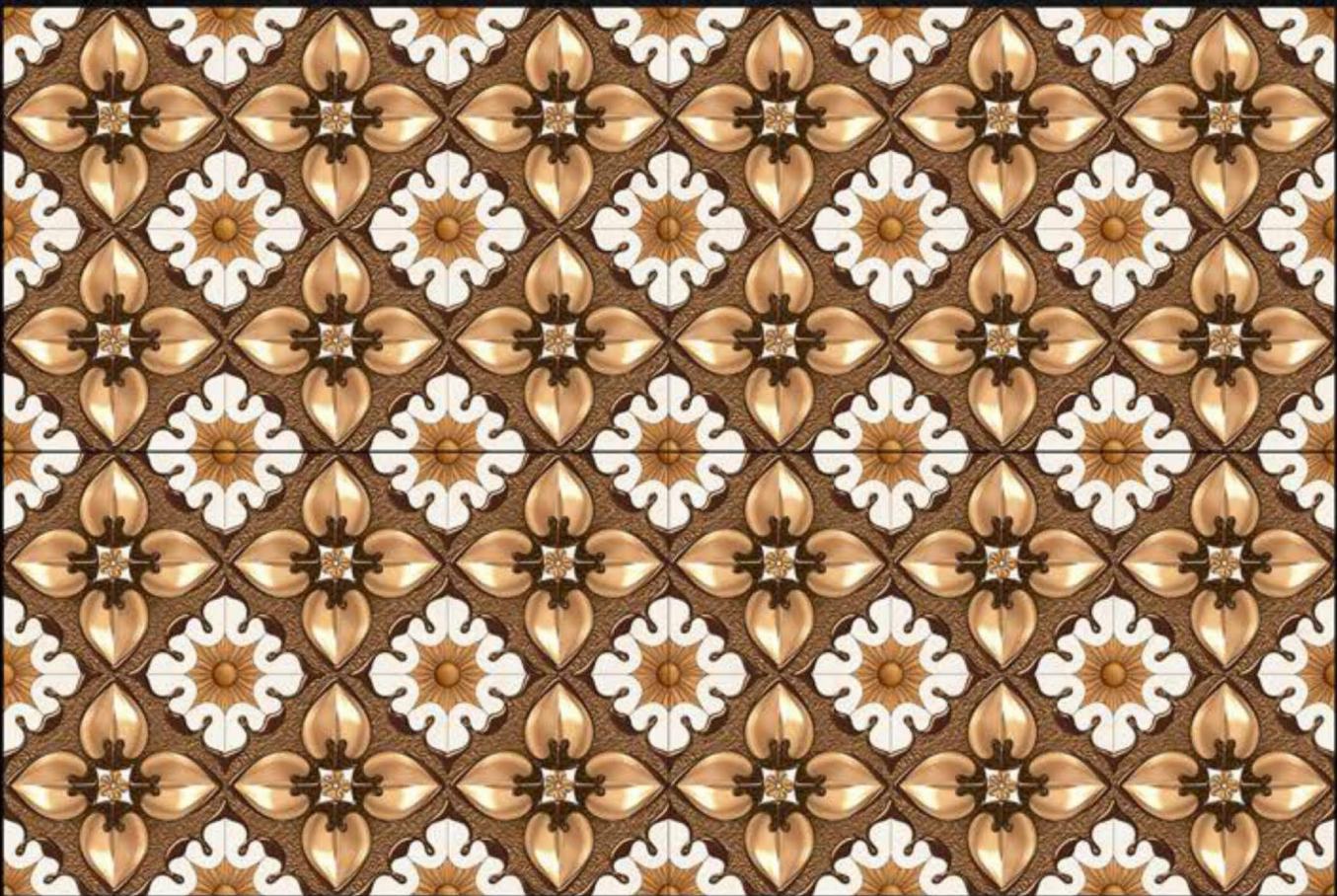


1716-DK





1718-LT



1718-HL-1



1718-DK





1719-LT



1719-HL-1



1719-DK





1721-LT

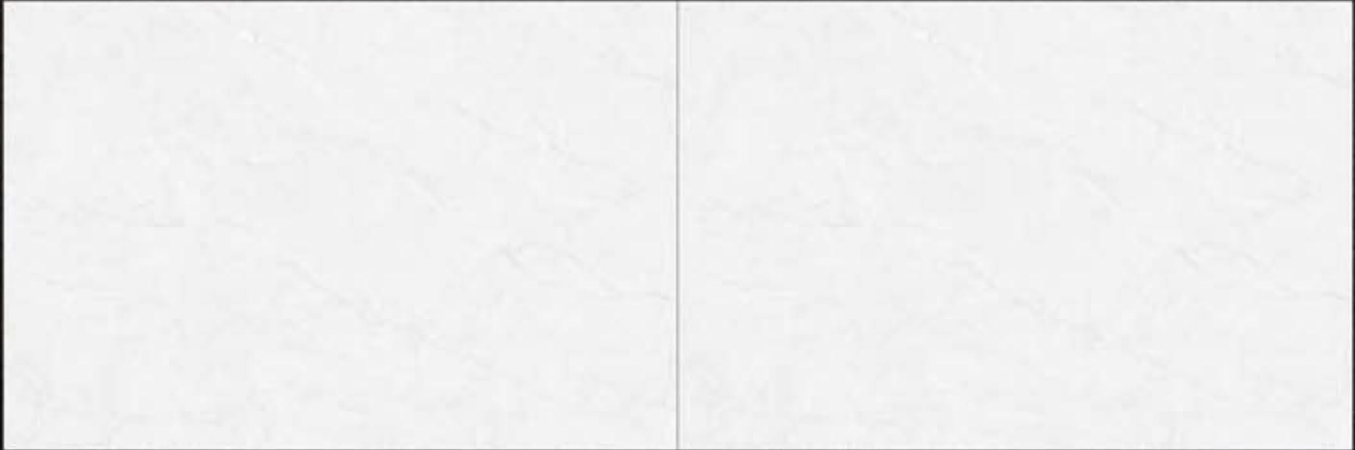


1721-HL-1



1721-DK





1722-LT



1722-HL-1

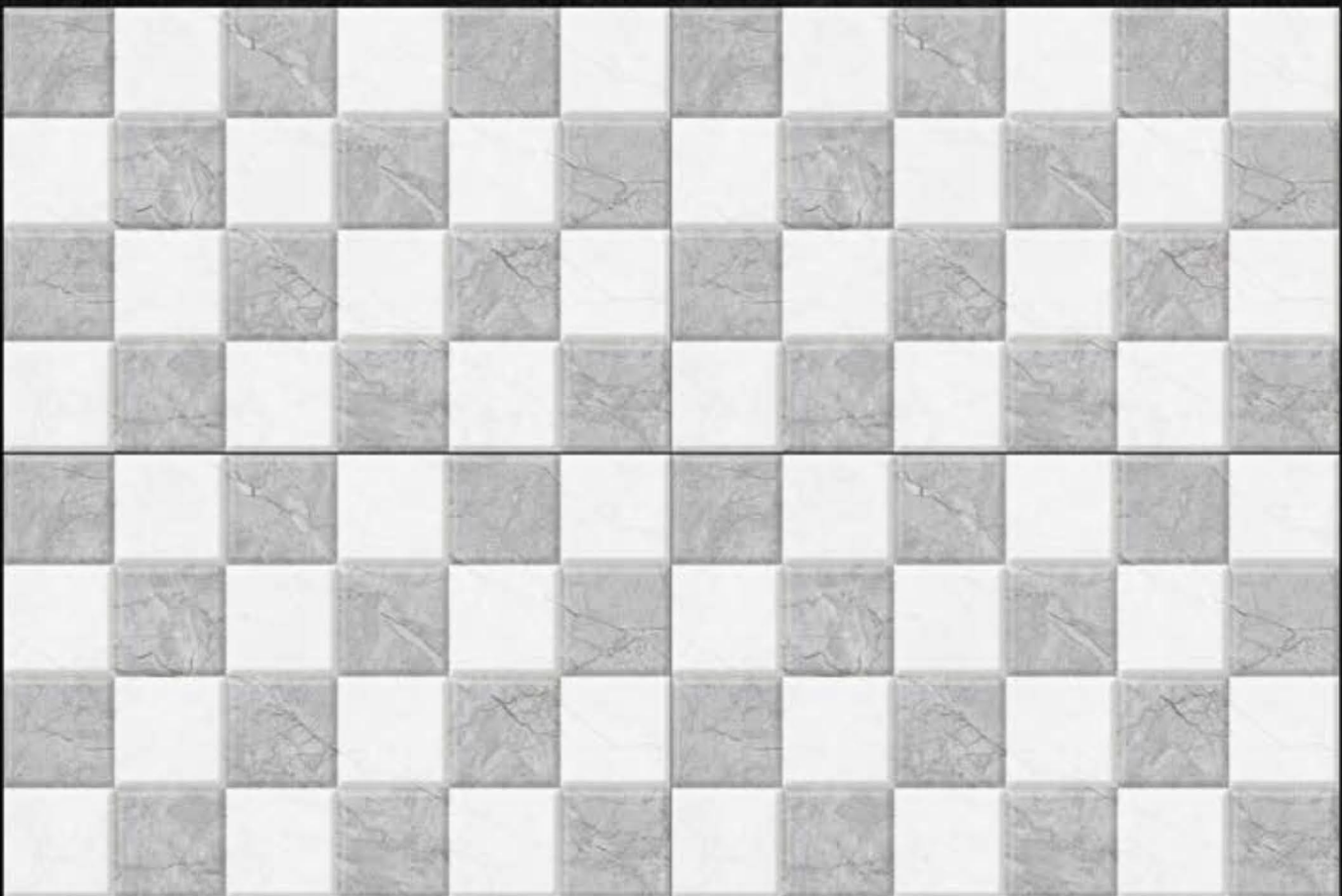


1722-DK





1722-LT



1722-HL-2



1722-DK



1723-LT



1723-HL-1



1723-DK





1724-LT



1724-HL-1



1724-DK

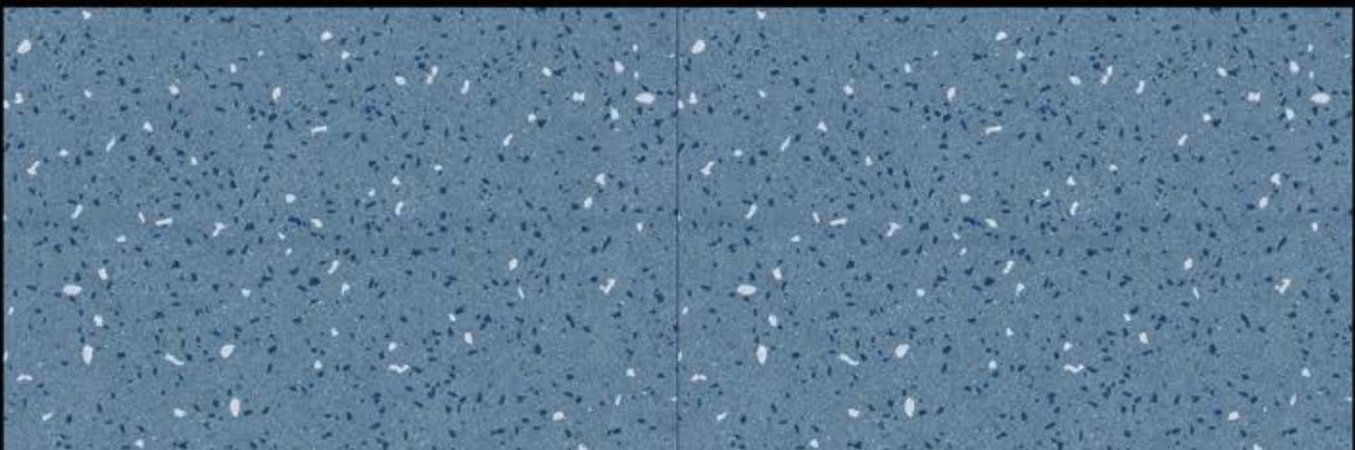




1726-LT



1726-HL-1



1726-DK





1727-LT



1727-HL-1



1727-DK





1729-LT



1729-HL-1



1729-DK





1730-LT

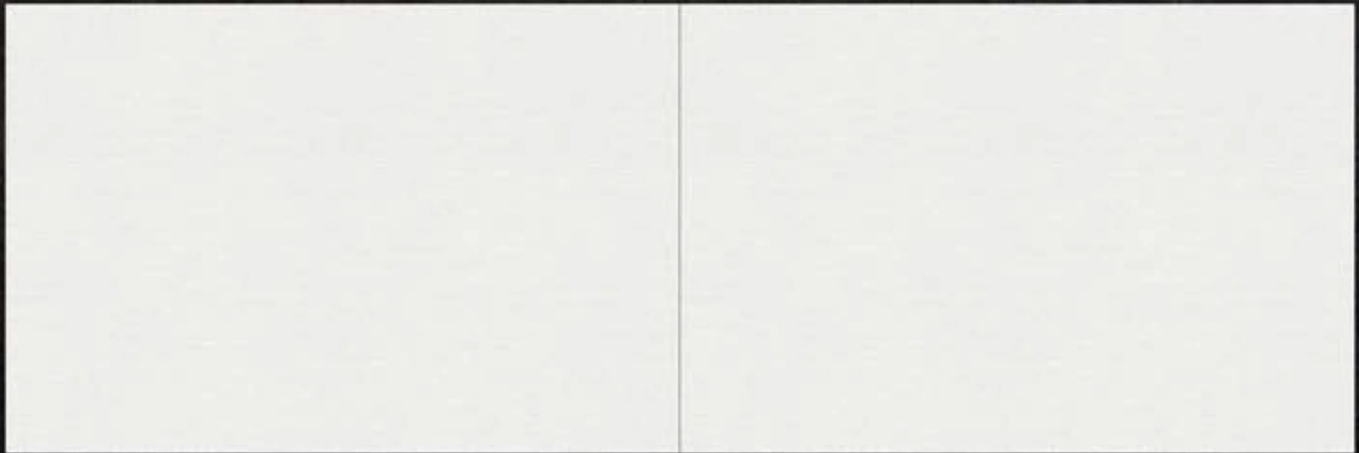


1730-HL-1



1730-DK

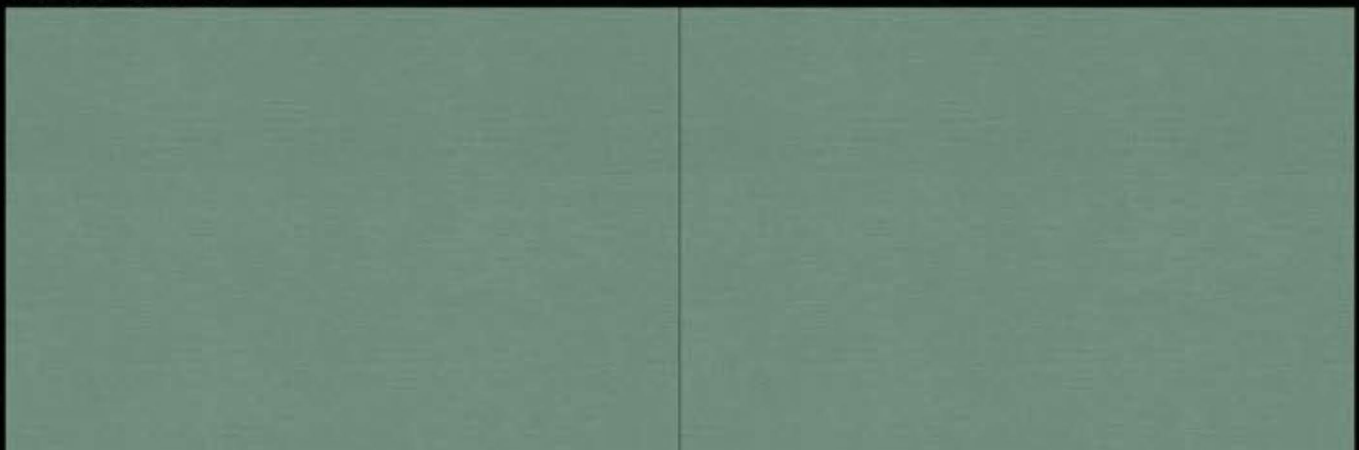




1732-LT



1732-HL-1



1732-DK





1735-LT



1735-HL-1



1735-LT





1737-LT

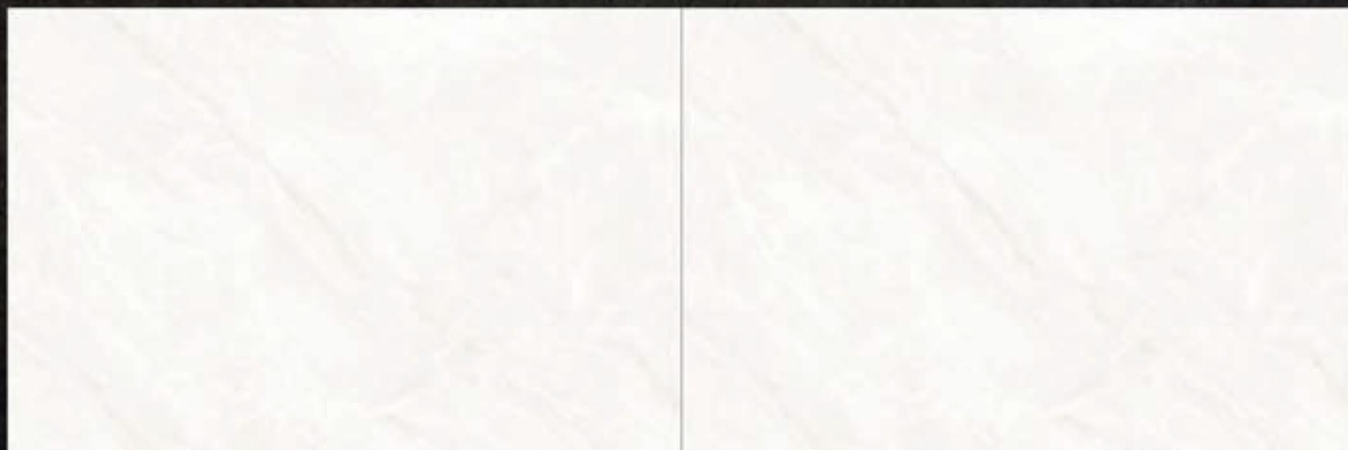


1737-HL-1



1737-DK





1737-LT



1737-HL-2



1737-DK





1739-LT

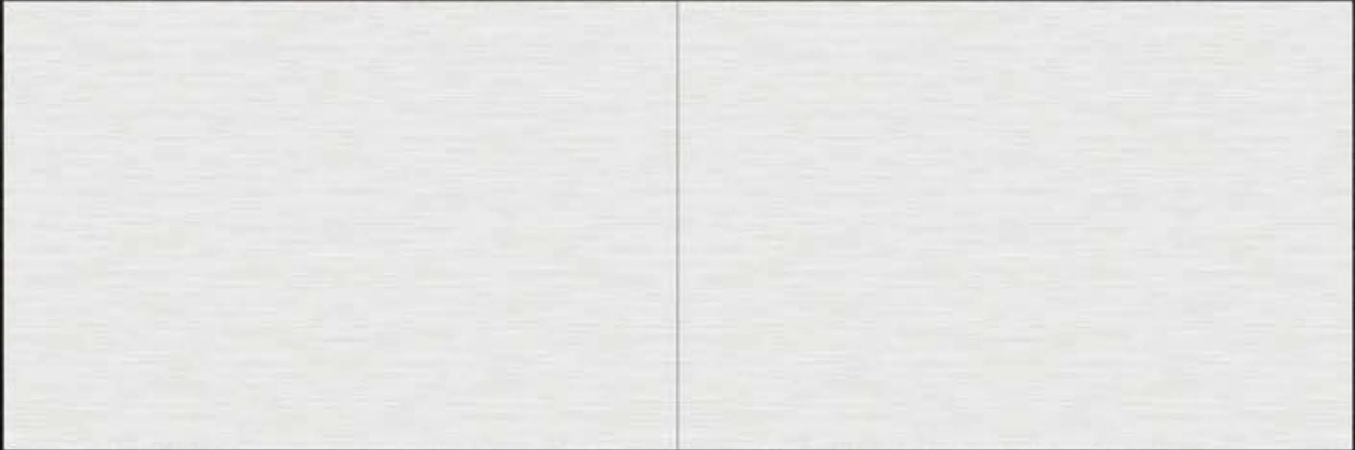


1739-HL-1



1739-DK

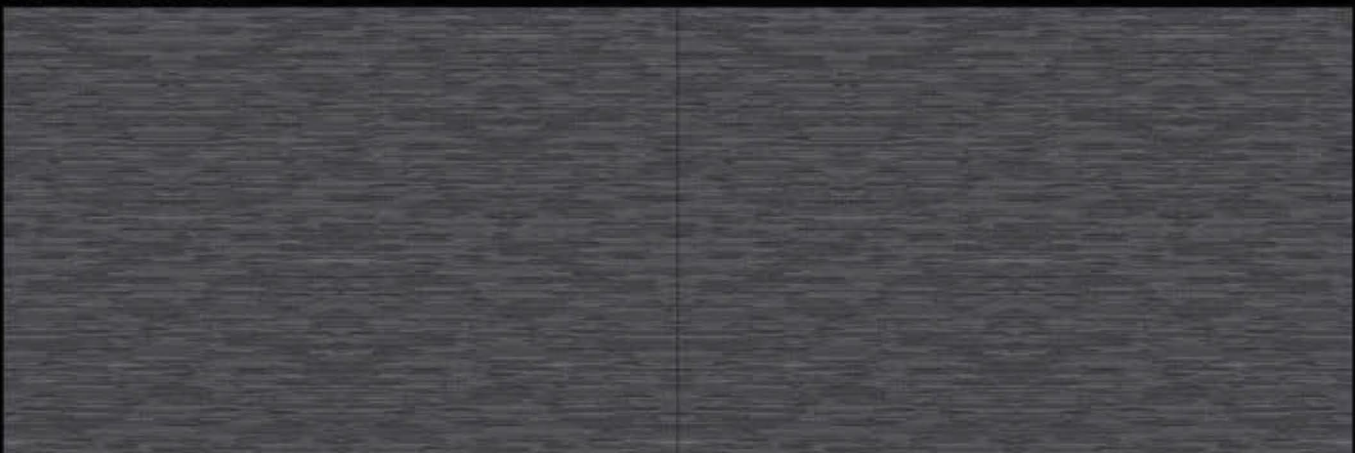




1740-LT

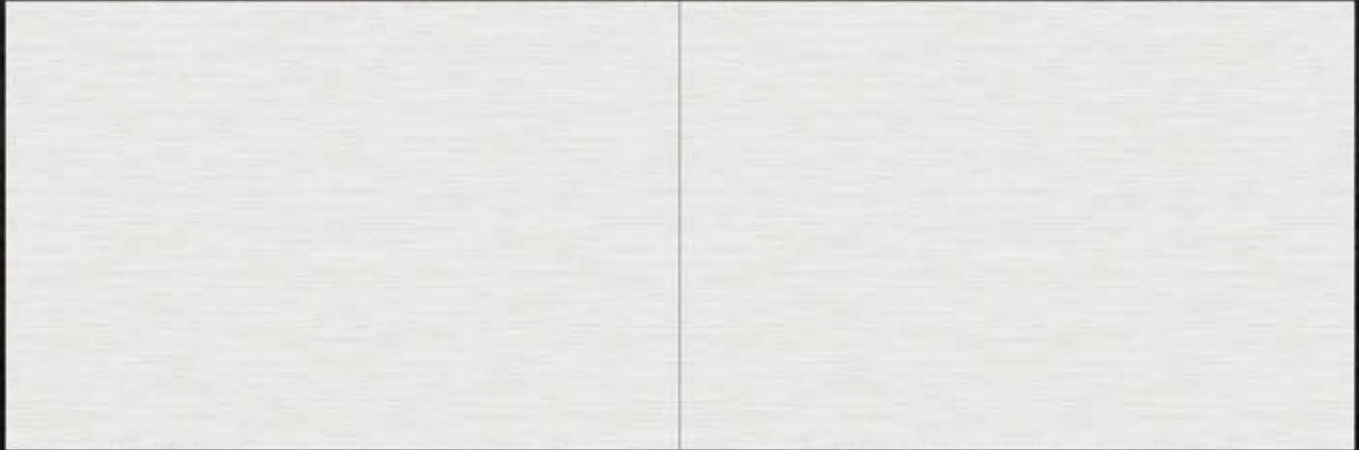


1740-HL-1



1740-DK





1740-LT



1740-HL-2



1740-DK





1741-LT



1741-HL-1



1741-DK

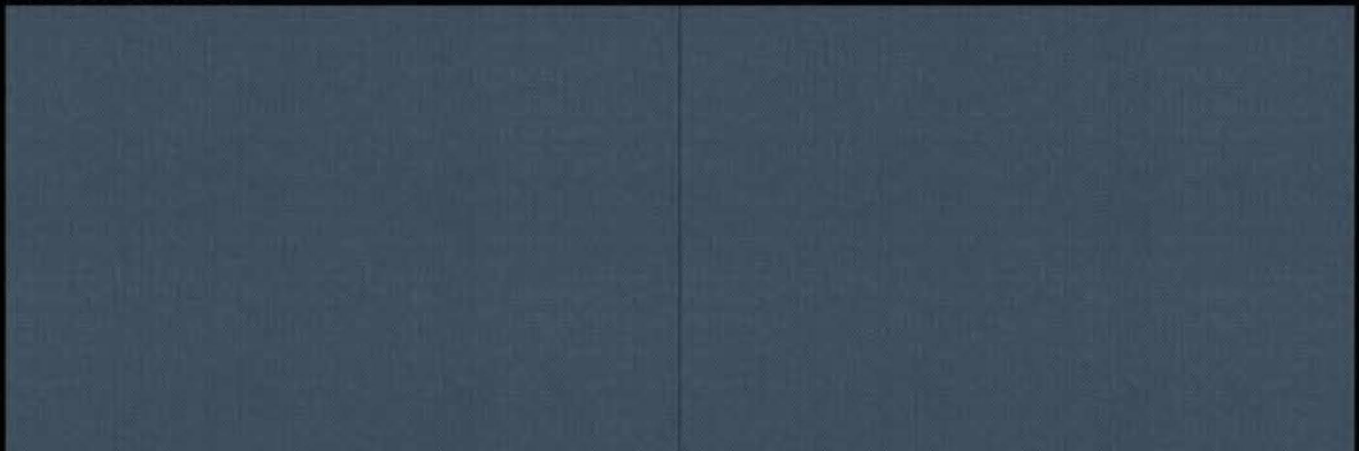




1743-LT

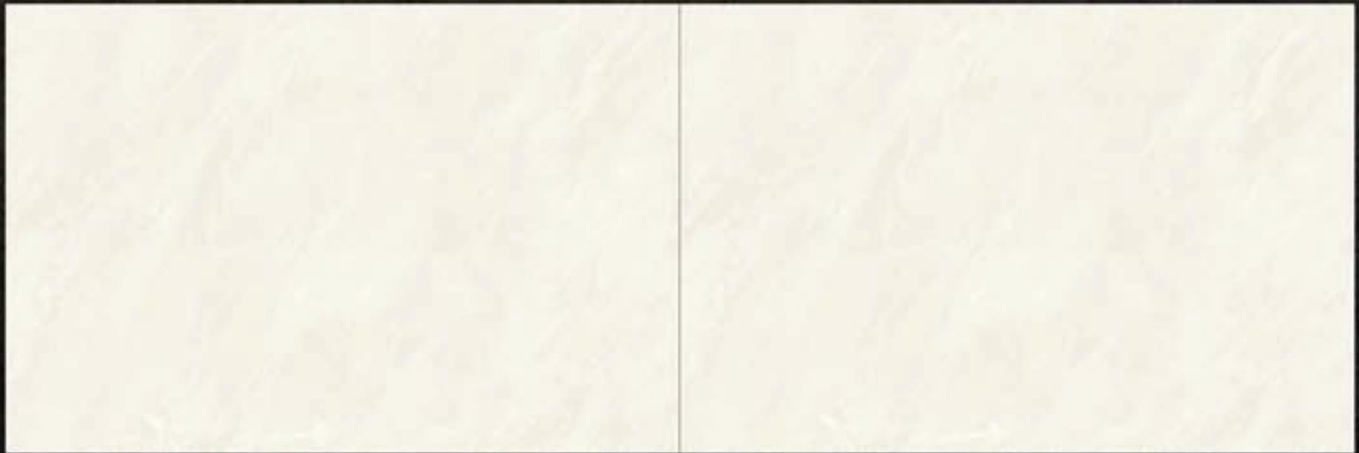


1743-HL-1



1743-DK





1744-LT



1744-HL-1



1744-DK





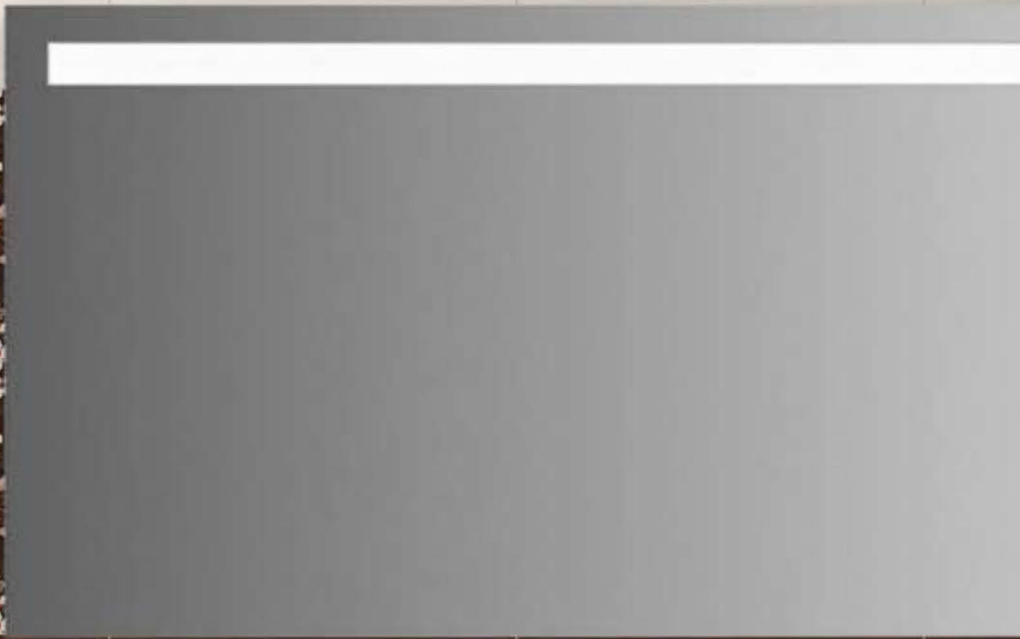
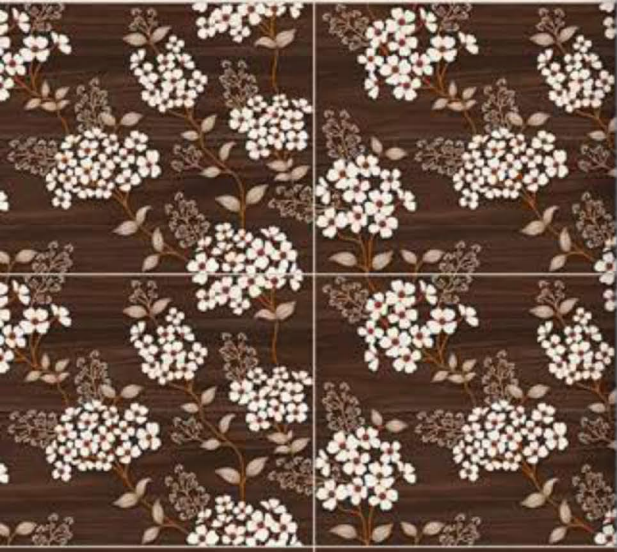
1745-LT



1745-HL-1

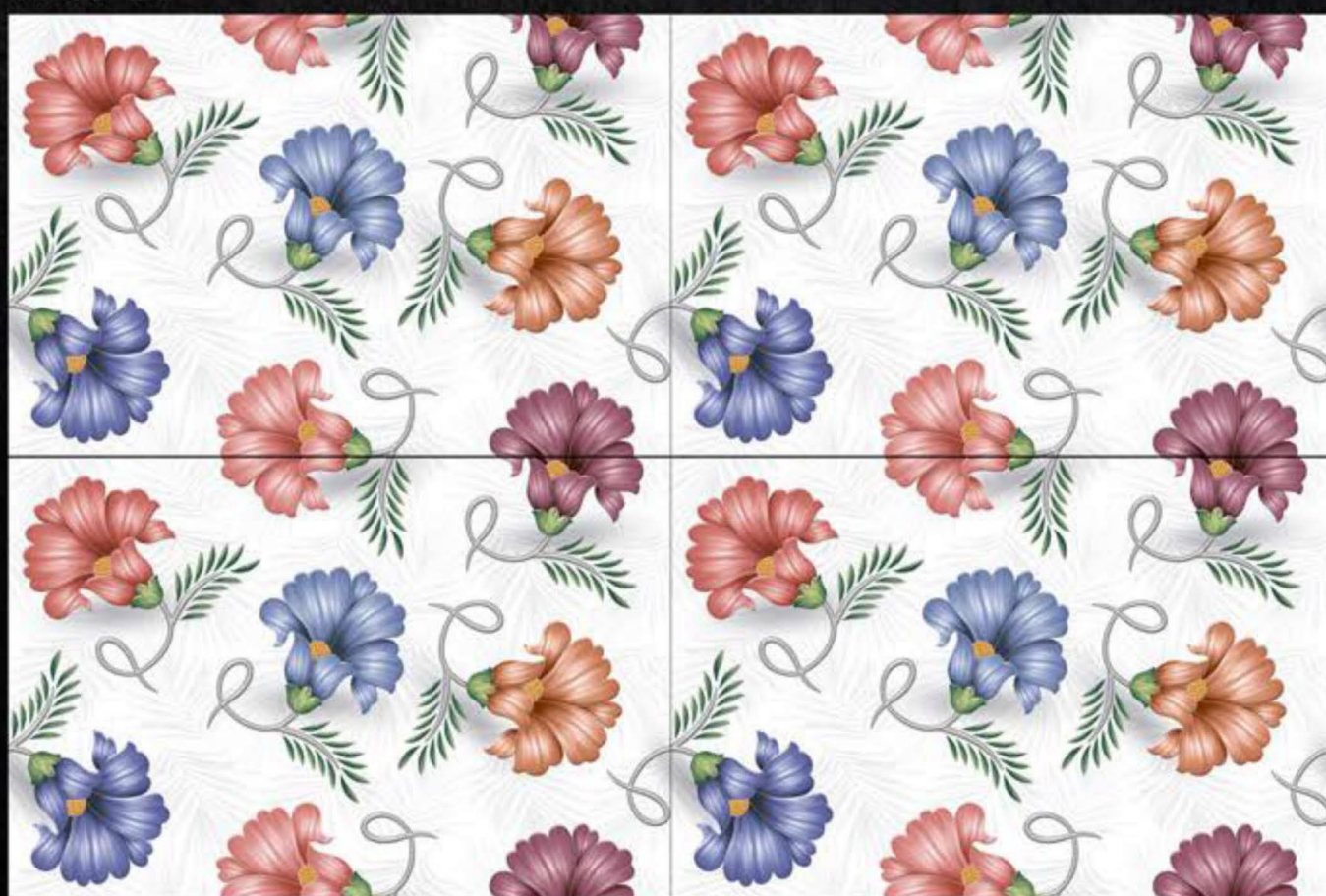


1745-DK





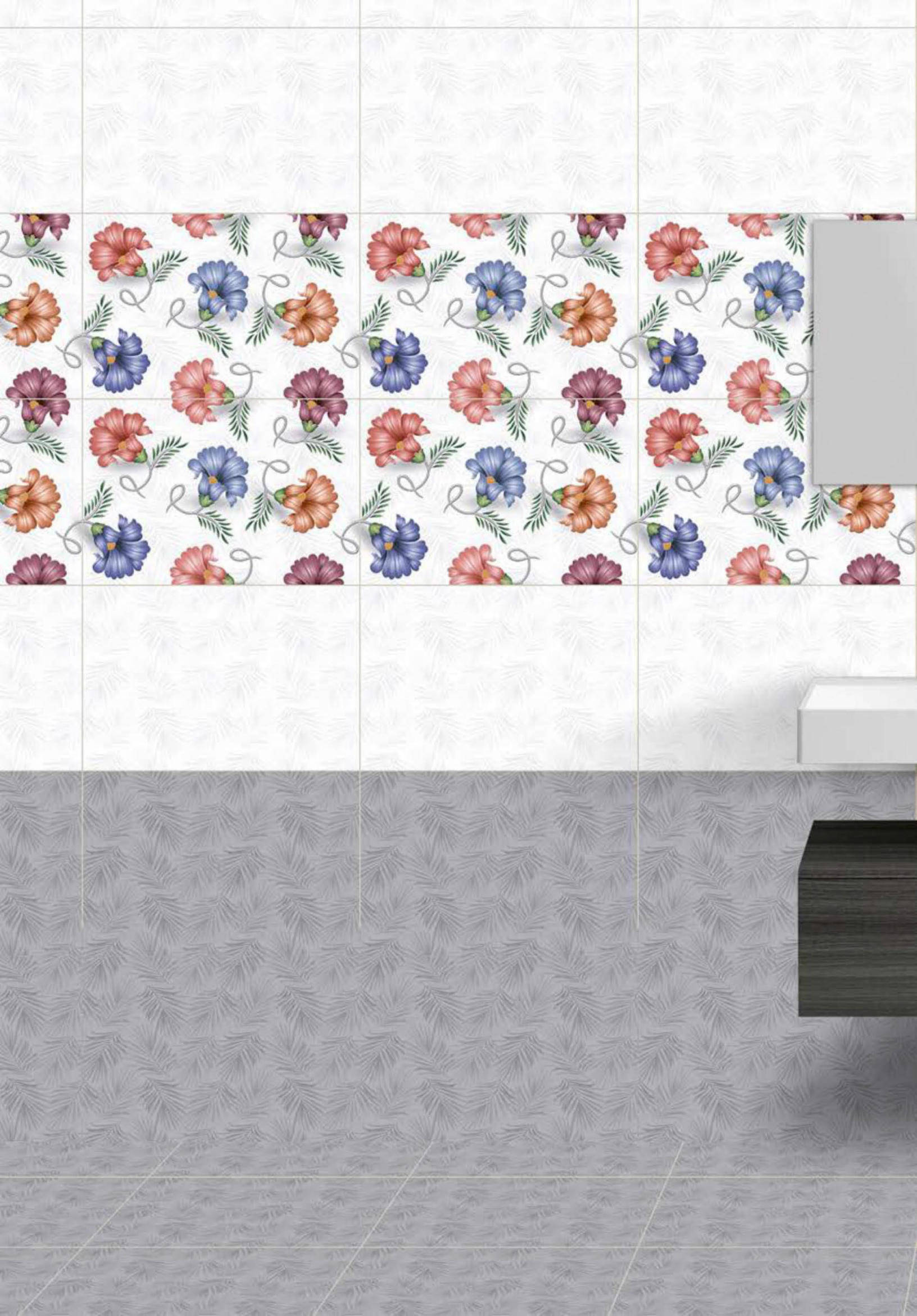
1746-LT

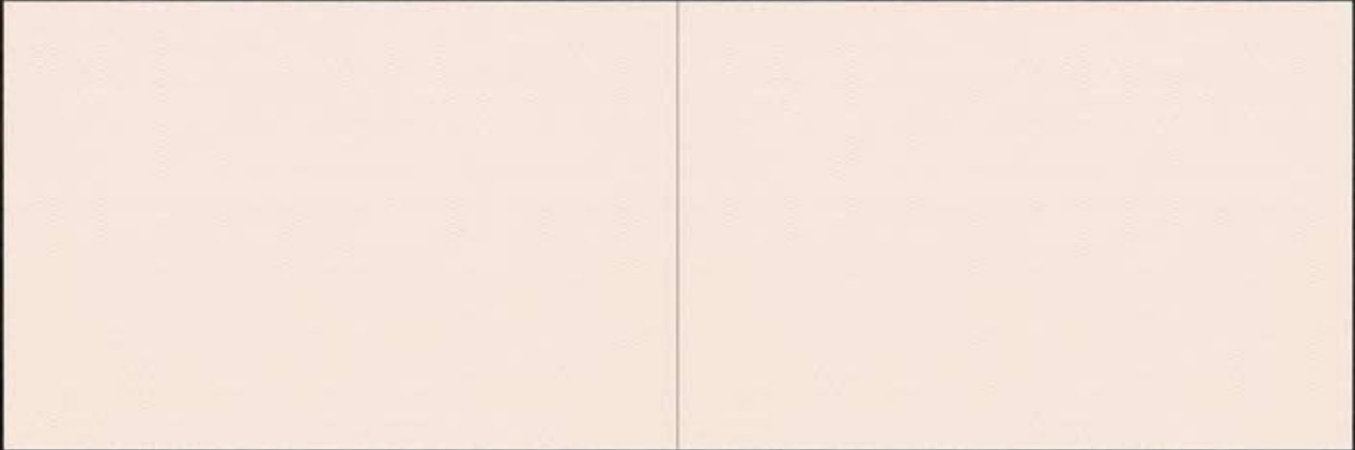


1746-HL-1



1746-DK

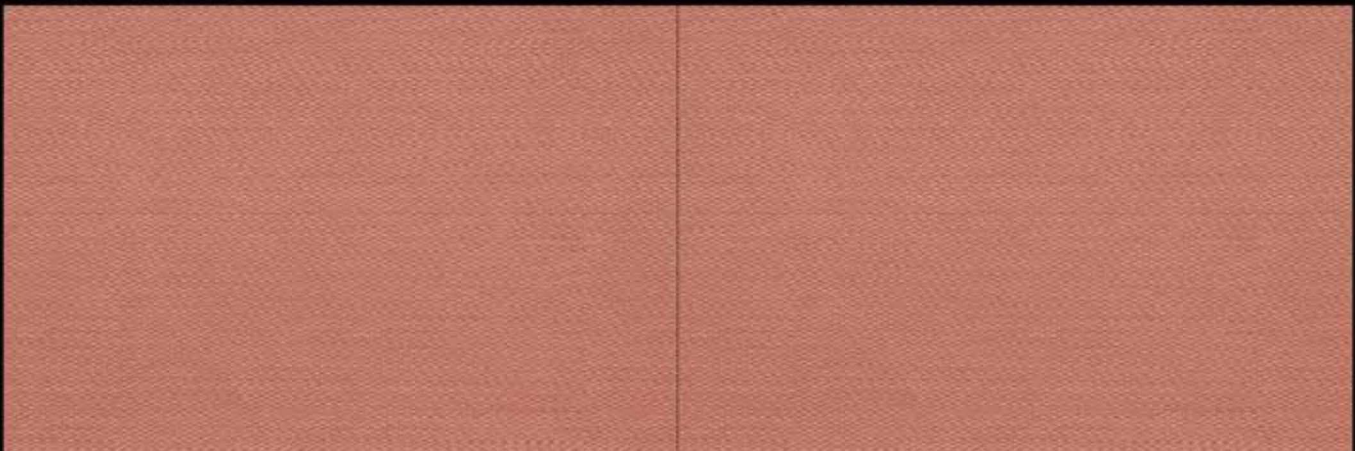




1747-LT



1747-HL-1



1747-DK





1748-LT



1748-HL-1



1748-DK

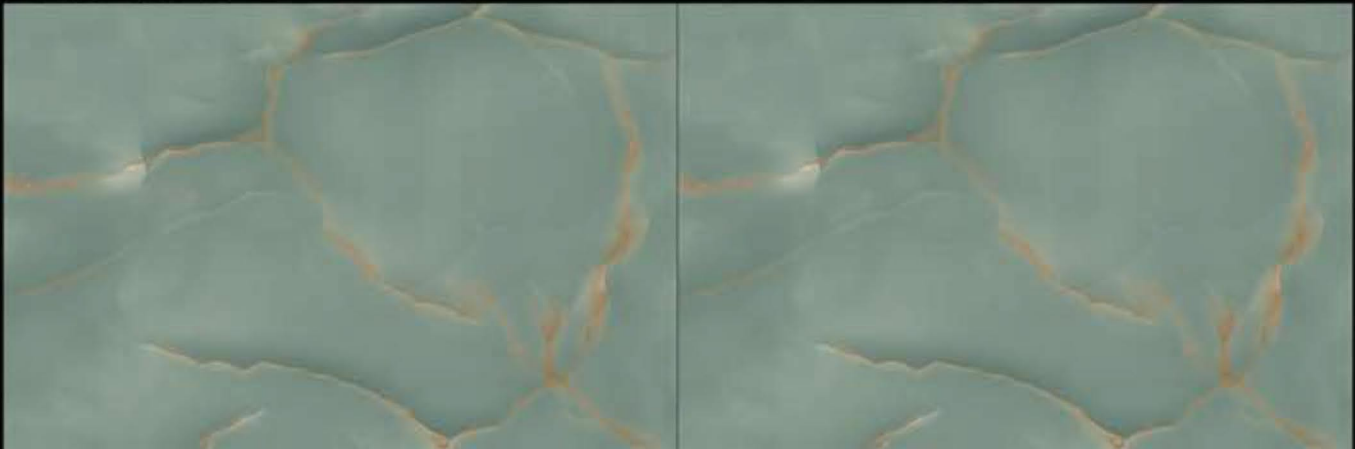




1749-LT



1749-HL-1

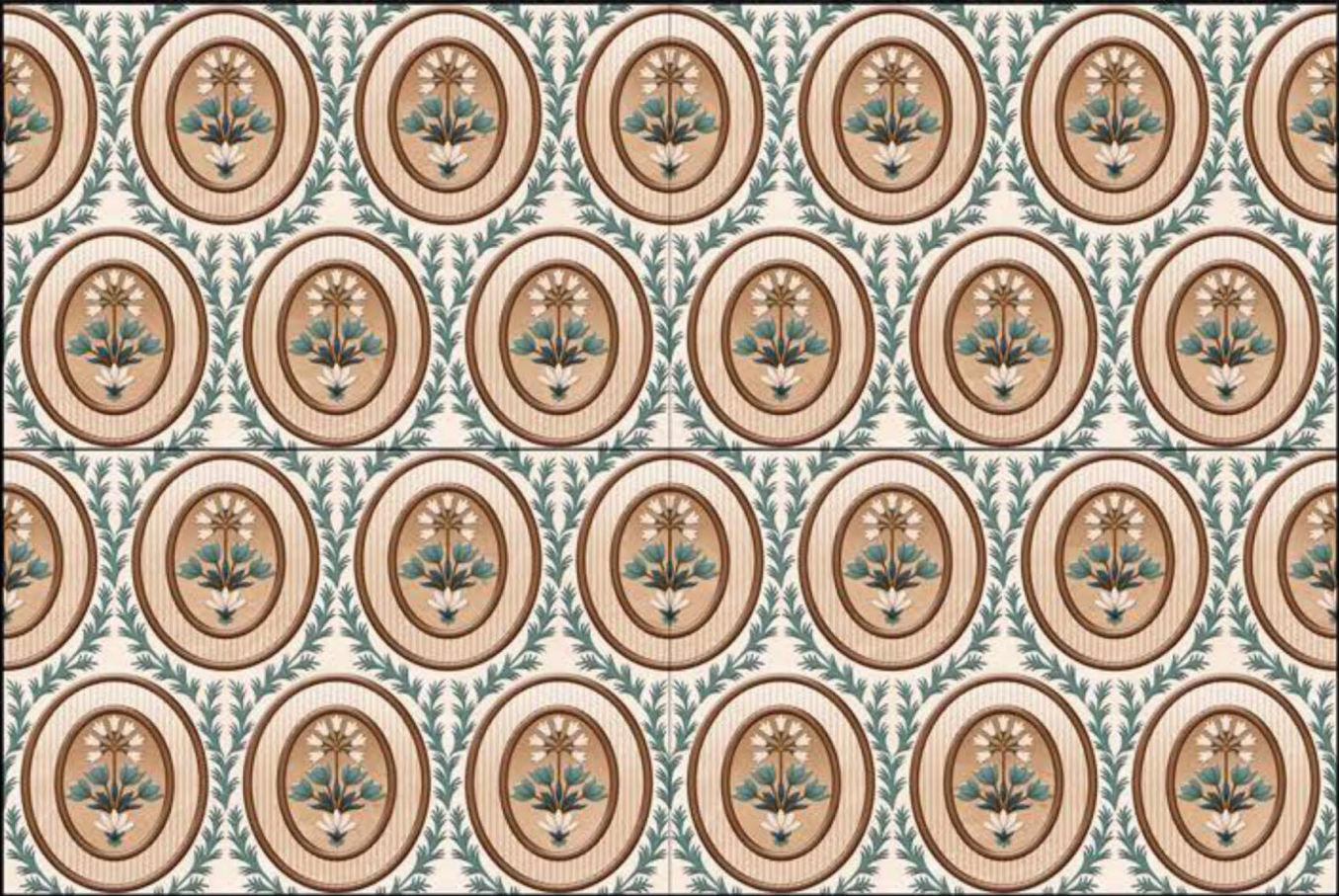


1749-DK





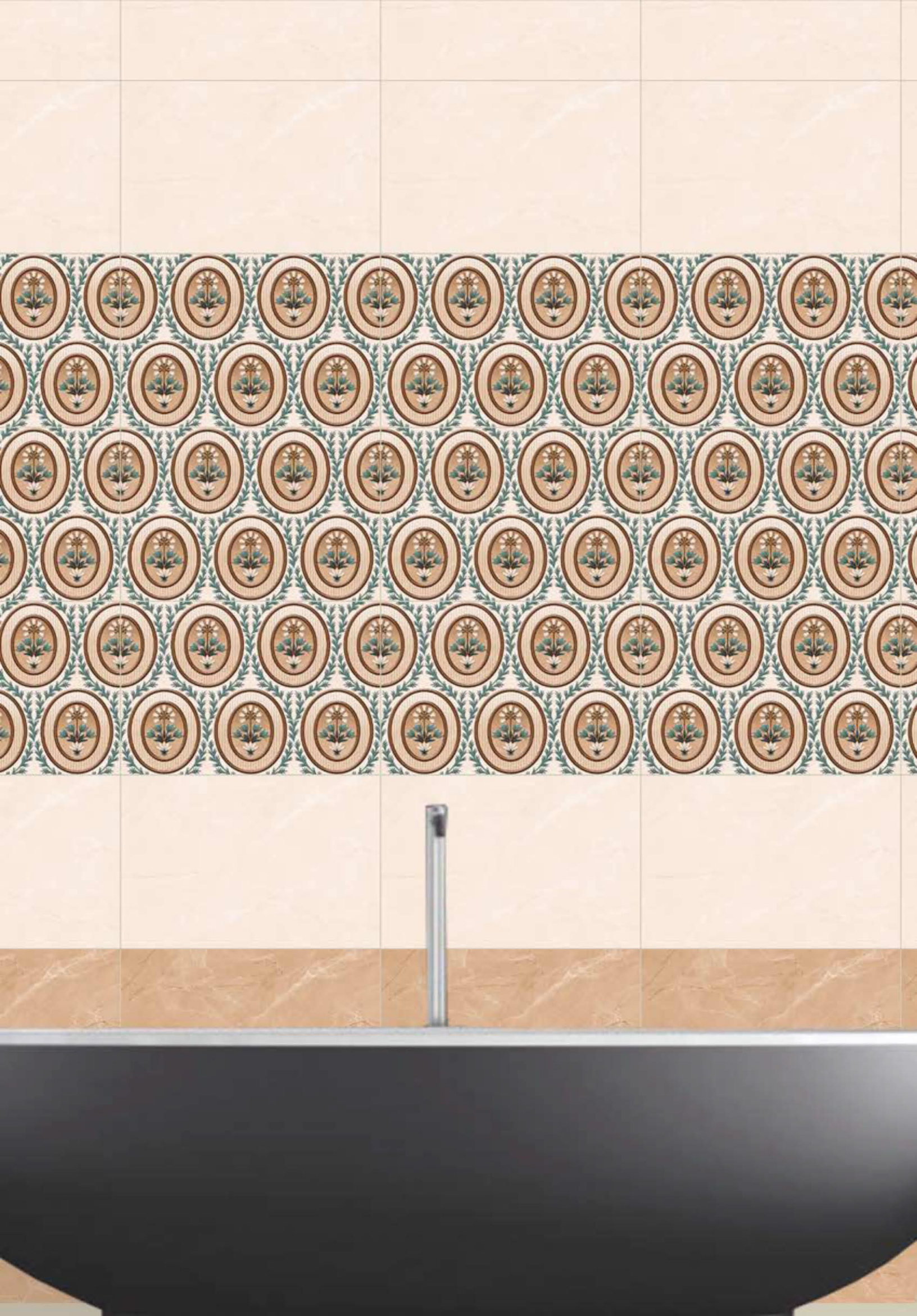
1750-LT



1750-HL-1

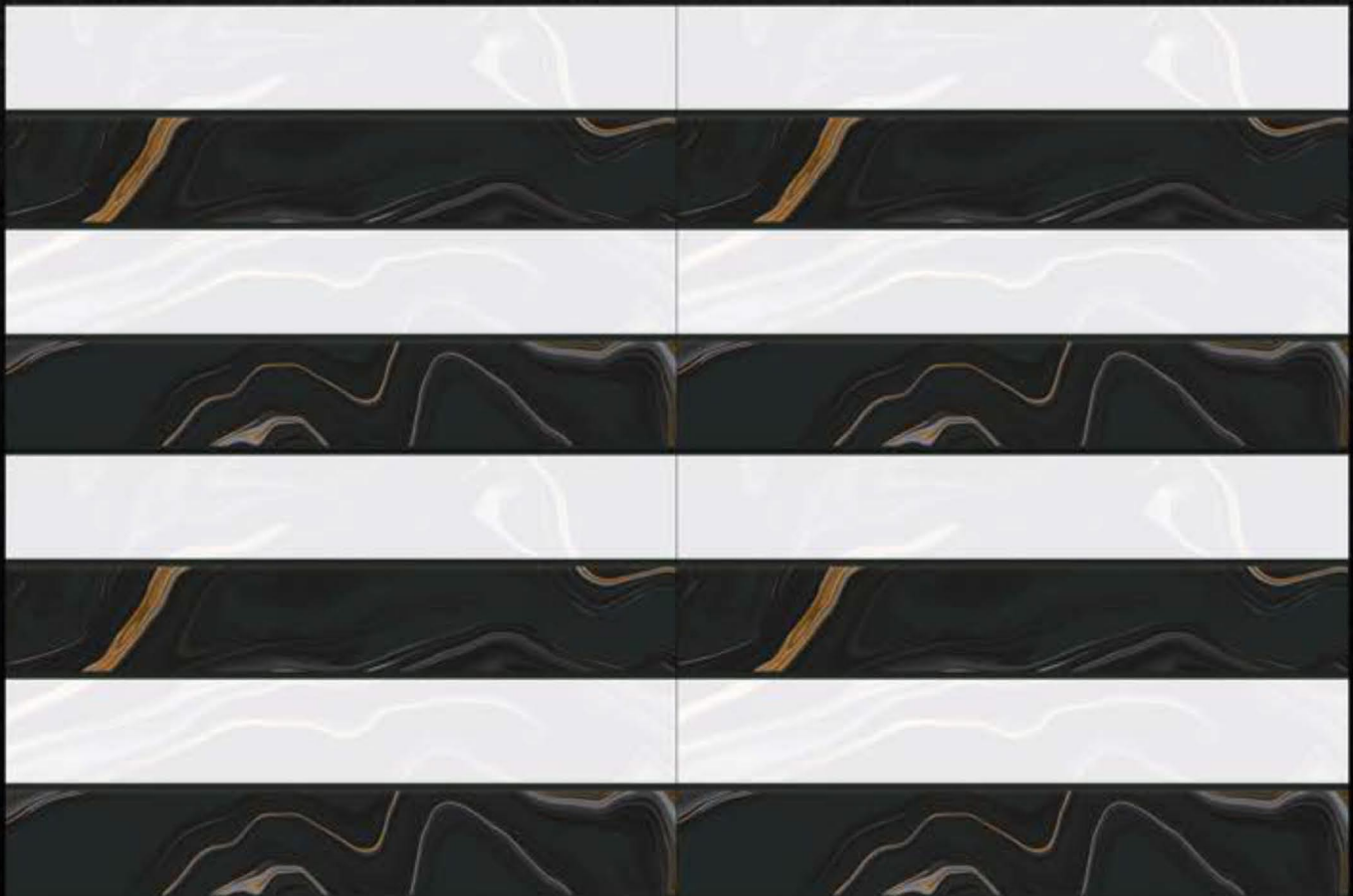


1750-DK

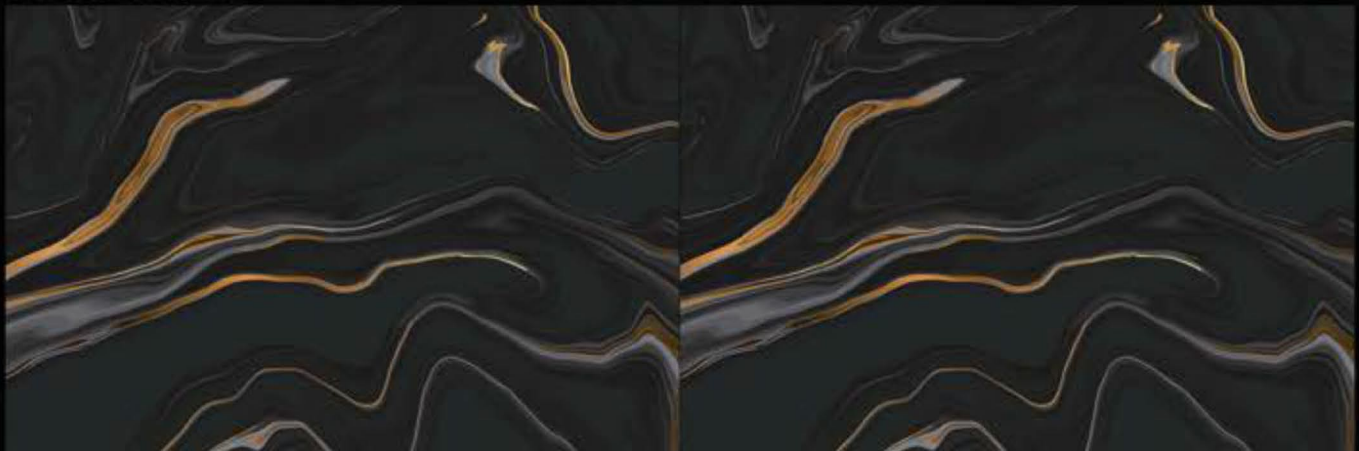




1758-LT



1758-HL-1



1758-DK

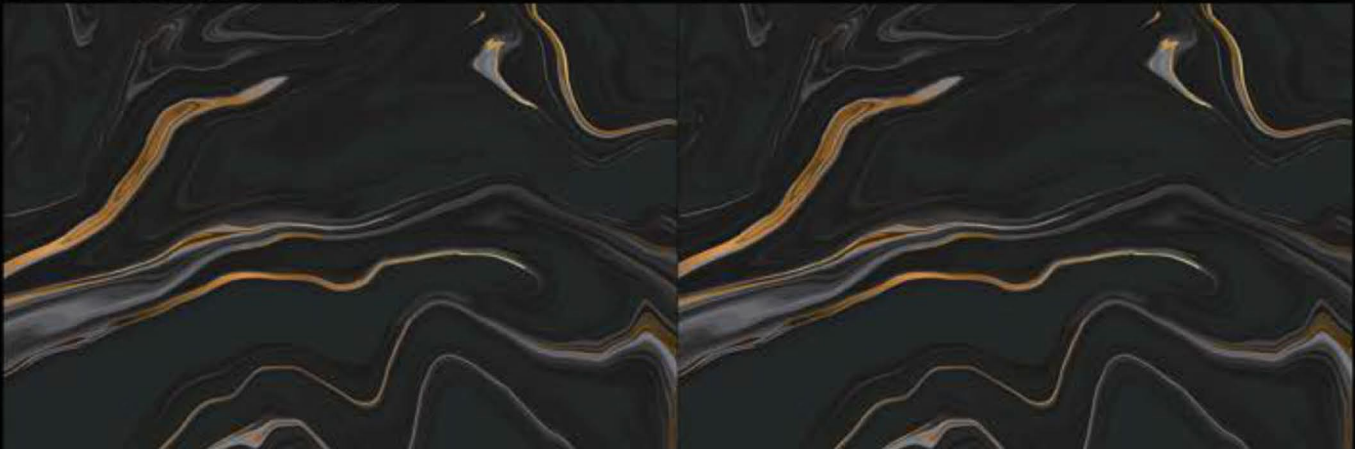




1758-LT



1758-HL-2-PLAIN

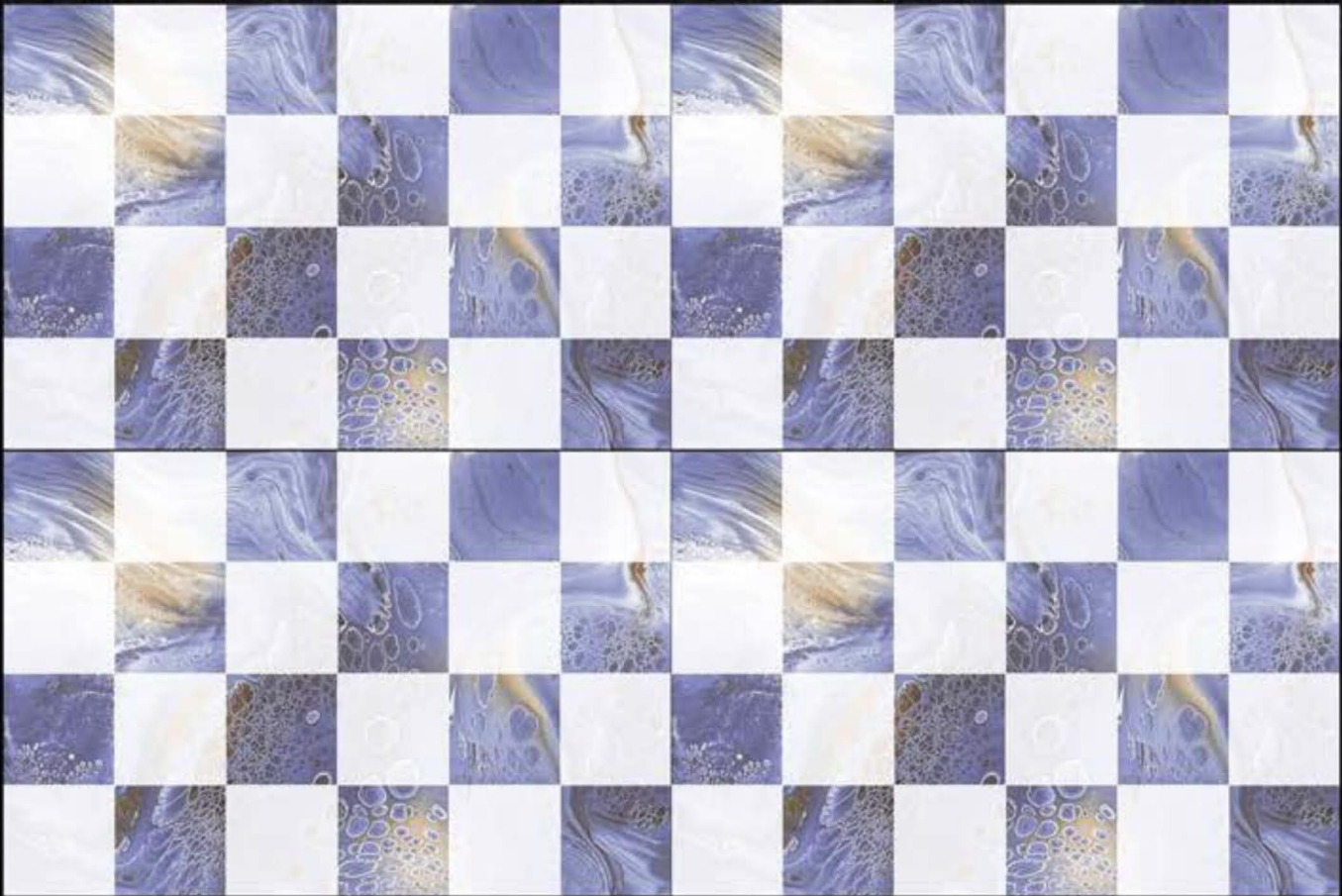


1758-DK





1759-LT



1759-HL-1

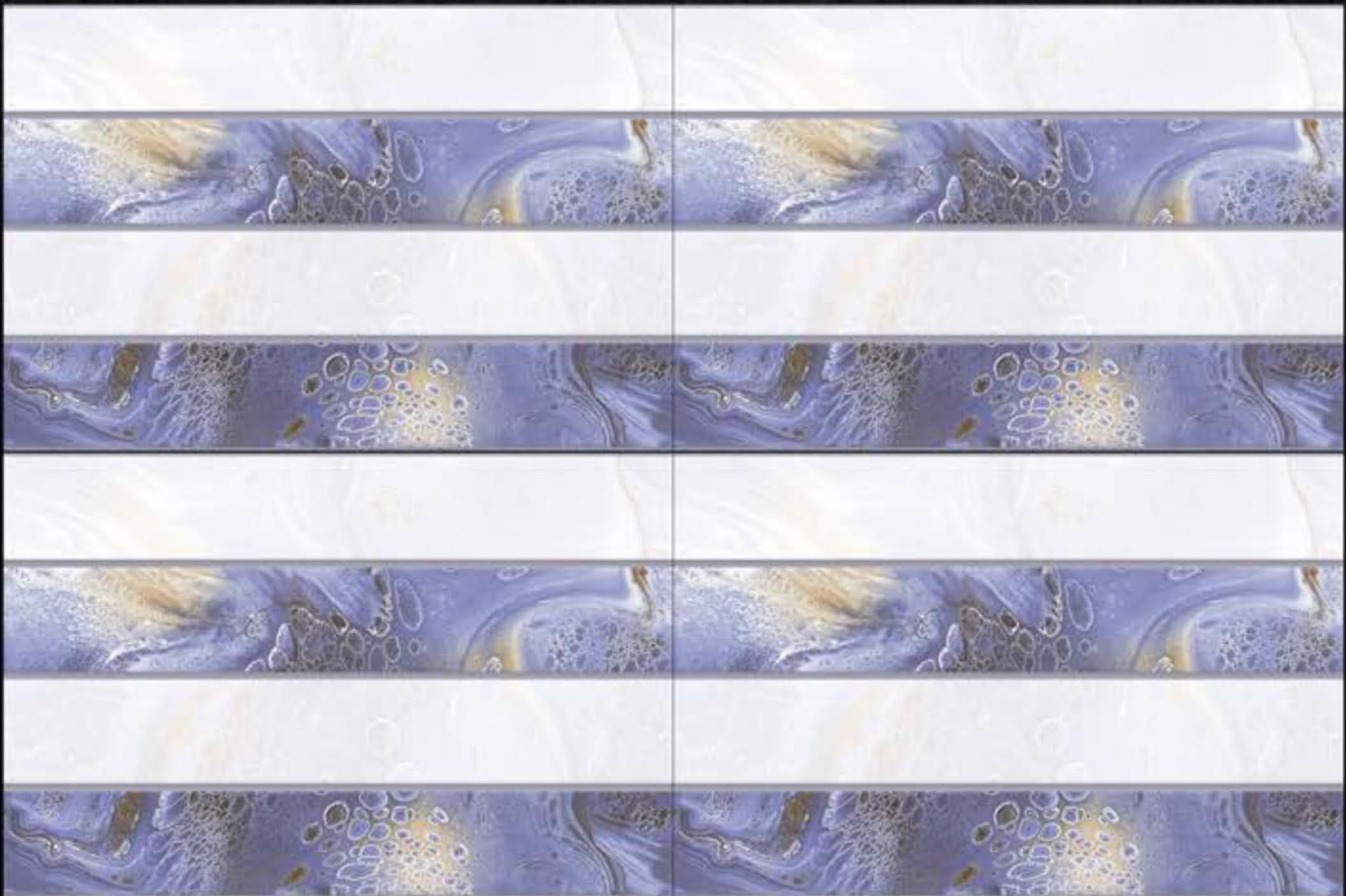


1759-DK





1759-LT



1759-HL-2



1759-DK





1759-LT



1759-HL-3-PLAIN



1759-DK





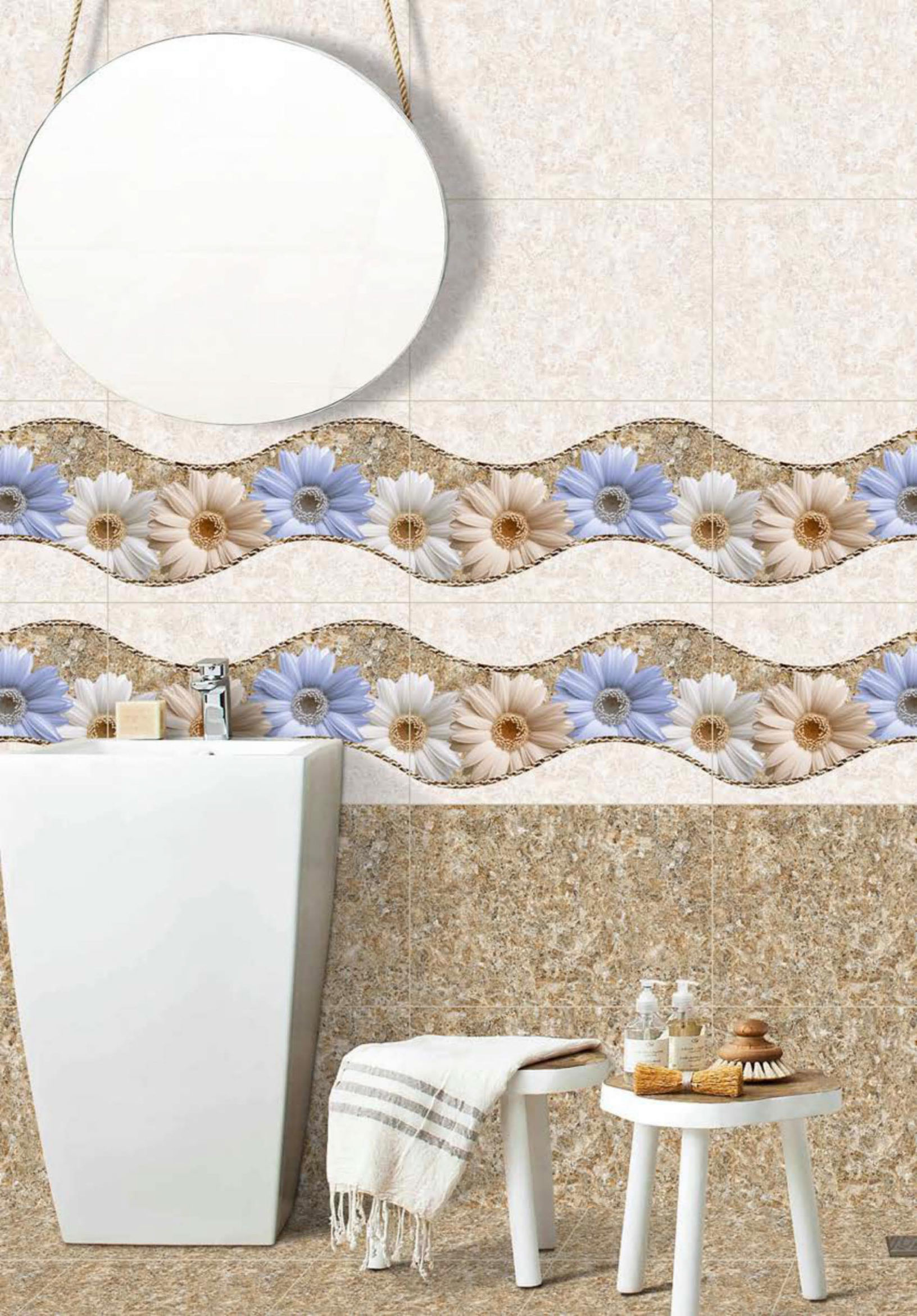
1760-LT



1760-HL-1

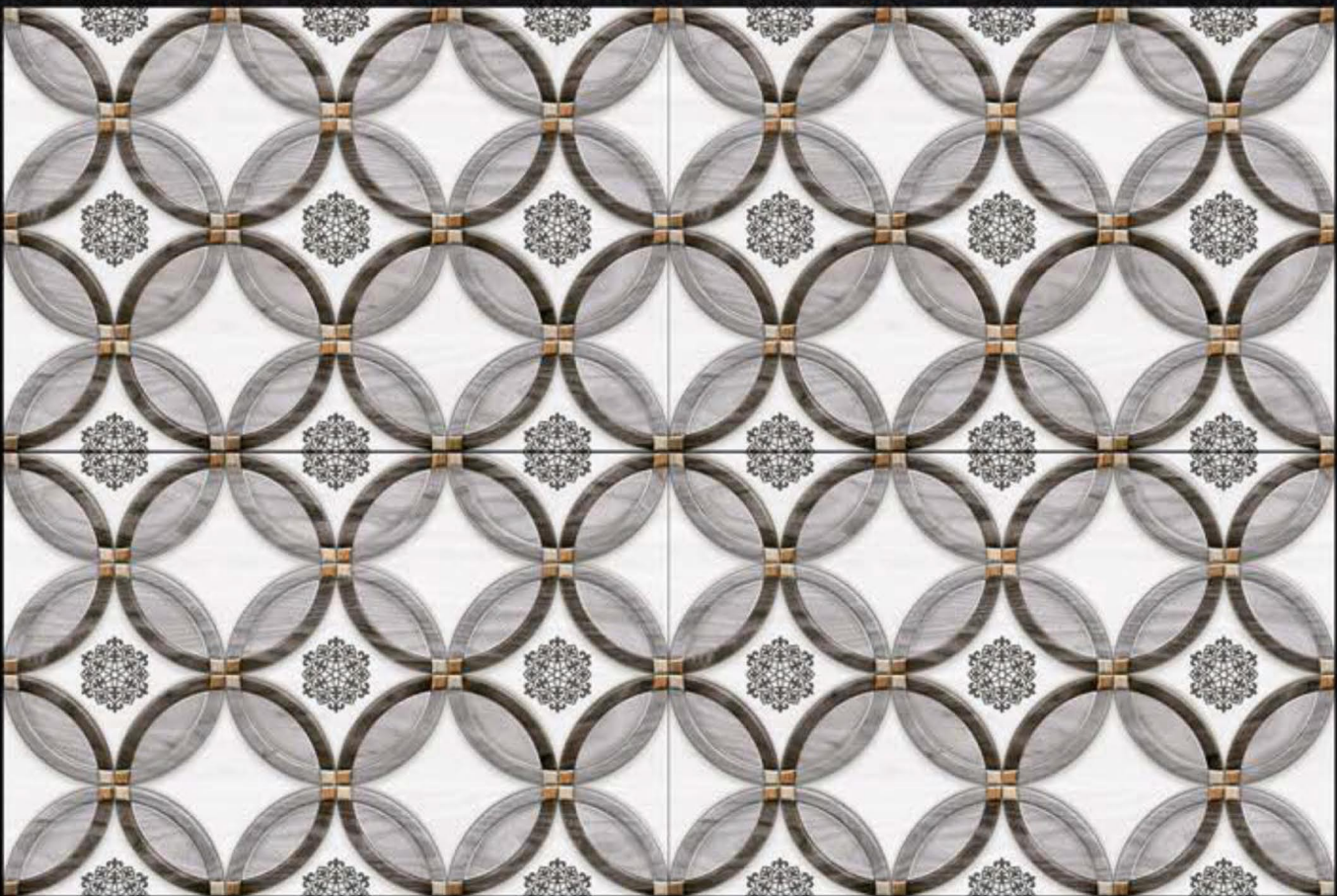


1760-DK





1769-LT



1769-HL-1



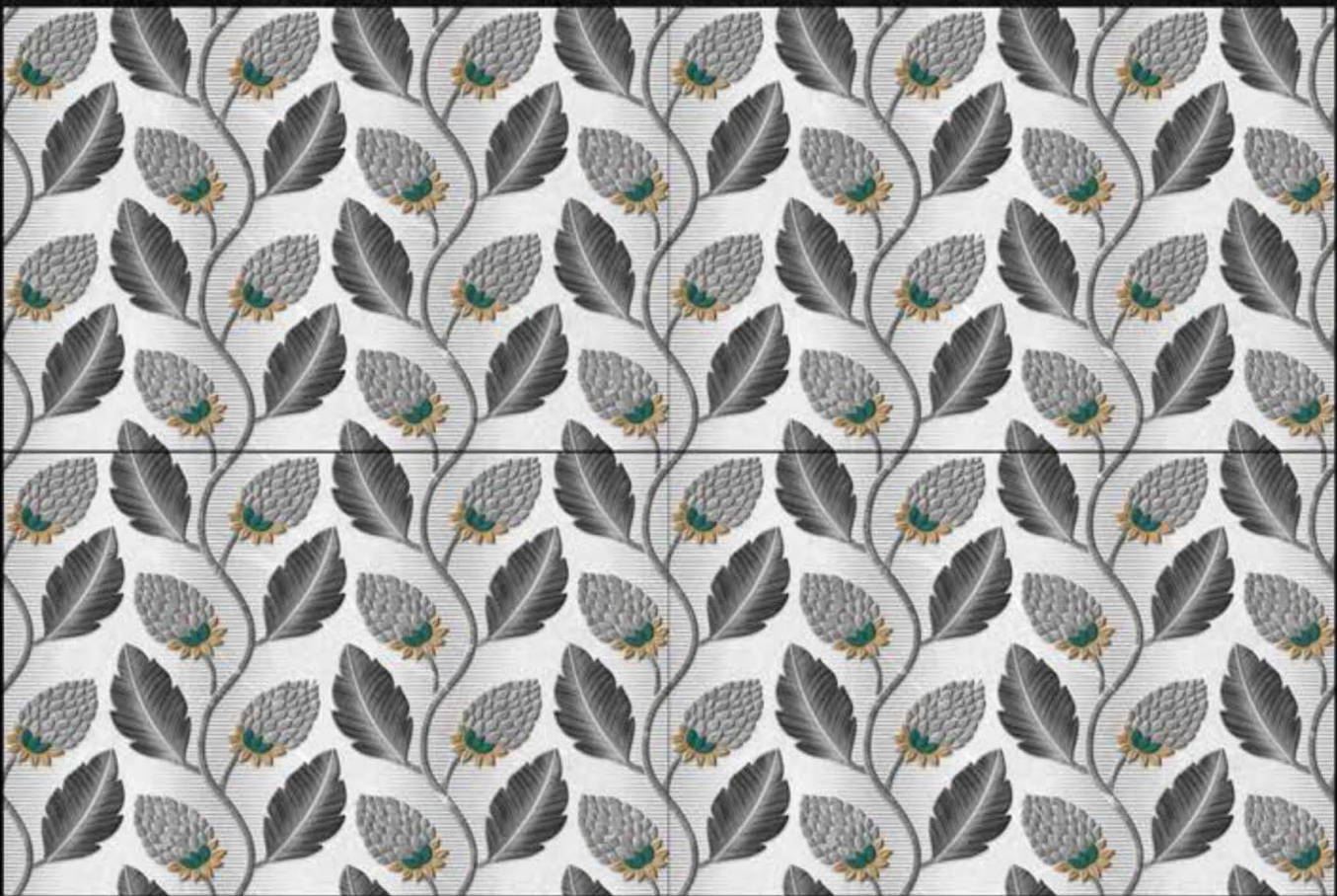
1769-DK



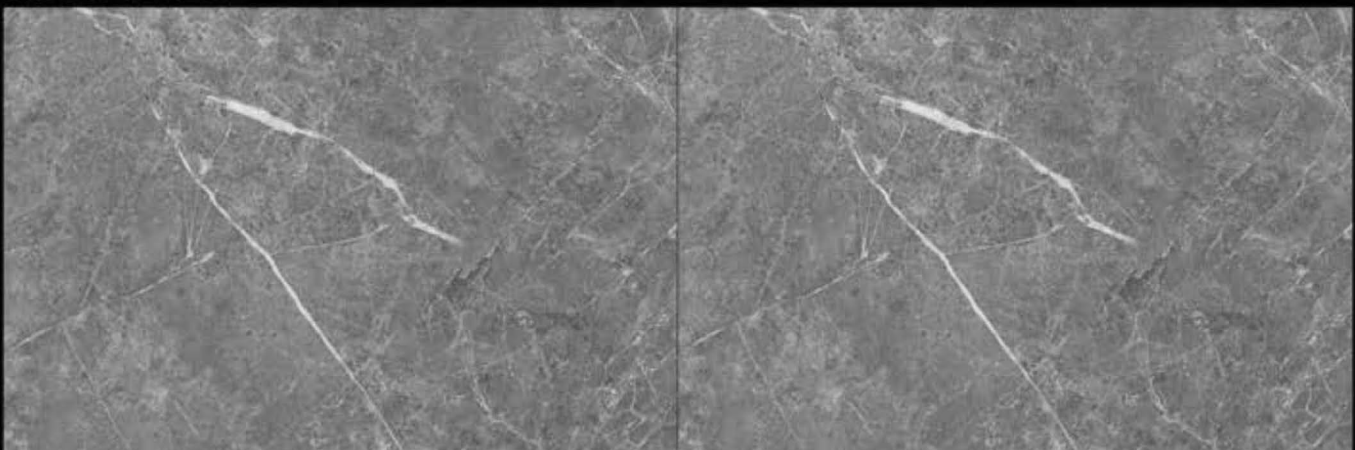
teuco



1779-LT



1779-HL-1



1779-DK



OUR PRESENCE IN MORE THEN 65+ COUNTRIES

We always ensure that our buyers get the full value of their money once they place order with us. We always adhere to the delivery schedule stipulated in the contracts and ship the goods timely to our buyers, We closely examine the entire product development & carefully monitor the production process and only after the products go through the multiple quality assurance tests, we consider them ready for delivery. We ensure that each product perfectly meets the specifications required by our buyers

export



The best time
company ever



warehouse

Amman City, Jordan
Maurit City, Libya
Basra City, Iraq
Dubai, United Arab Emirates
Beirut, Lebanon
Nouakchott, Mauritania